

DEPARTMENT OF THE ARMY TECHNICAL MANUAL

ORGANIZATIONAL MAINTENANCE REPAIR PARTS
AND SPECIAL TOOLS LISTS

PRINTING PRESS, OFFSET: CYLINDER-ROTARY, ELECTRIC MOTOR DRIVEN

AC, 208 V, 3 PHASE, 60 HZ; MIL SPEC P-11058

(AMERICAN TYPE FOUNDERS MODEL DP-ATF)

FSN 3610-269-7474



HEADQUARTERS, DEPARTMENT OF THE ARMY
MARCH 1970

ORGANIZATIONAL MAINTENANCE REPAIR PARTS AND SPECIAL TOOLS LISTS

**PRINTING PRESS, OFFSET: CYLINDER-ROTARY, ELECTRIC MOTOR DRIVEN,
 AC, 208 V, 3 PHASE, 60 HZ; MIL SPEC P-1 058
 (AMERICAN TYPE FOUNDERS MODEL DP-ATF)
 FSN 3610-269-7474**

Current as of 2 May 1969

		Paragraph	Page
SECTION	I. INTRODUCTION		
	Scope	1	iii
	General	2	iii
	Explanation of columns.....	3	ii
	Special information	4	iv
	How to locate repair parts	5	v
	Abbreviations	6	v
	Federal supply codes for manufacturers	7	v
	Recommendations for maintenance manual improvements	8	v
	II. PRESCRIBED LOAD ALLOWANCE.....		vii
	III. SPECIAL TOOLS, TEST AND SUPPORT EQUIPMENT FOR ORGANIZATIONAL MAINTENANCE		
Group	26. Tools and Test Equipment		
	2604 Special tools		1
SECTION	IV. REPAIR PARTS FOR ORGANIZATIONAL MAINTENANCE		
Group	18. Body, Cab, Hood, Hull		
	1808 Boxes		1
	22. Body Chassis or Hull, and Accessory Items		
	2202 Accessories		1
	2210 Data plates		2
	40. Electric Motors		
	4007 Drive components		2
	4010 Master or auxiliary control assembly		3
	42. Electrical Equipment		
	4216 Miscellaneous wiring, fittings, etc.		4
	43. Air and Vacuum Systems		
	4316 Assembled hose, fittings, lines, breathers, filters, and traps -		4
	4317 Manifold and/or control valves		7
	4319 Pumps and pump drives		8
	4320 Air vacuum and/or manuals controls		8
	47. Gages (Non-Electrical), Weighing and Measuring Devices		
	4701 Instruments (speed and distance)		8
	4702 Gages		9

* This manual supersedes TM 5-3610-202-20P, 10 February 1964, including all changes.

		Page
Group	65. Reproduction Equipment	
	6501 Offset press pile feeder	9
	6502 Offset press feeder	9
	6503 Offset main press assembly	12
	6504 Offset press inker	14
	6505 Offset press water system	15
	6506 Pile delivery	15
	76. Fire Fighting Equipment Components	
	7638 Portable fire fighting equipment (includes fire extinguishers).....	16
	95. General Use Standardized Parts	
	9501 Hardware supplies and bulk materiel, common	16
	99. Parts Peculiar	
	9901 Multi-listed parts	16
SECTION	V. FEDERAL STOCK NUMBER AND REFERENCE INDEX	

SECTION I INTRODUCTION

1. Scope

This manual lists repair parts and special tools required for the performance of organizational maintenance of the printing press.

2. General

a. The Repair Parts List is arranged as follows:

(1) Individual parts and major assemblies are listed alphabetically by item name within the numbered functional groups.

(2) Assembly components and subassemblies are indented and listed alphabetically by item number under major assemblies.

b. This Repair Parts and Special Tools List is divided into the following sections:

(1) *Prescribed Load Allowance (PLA)* - Section II. A consolidated listing of repair parts quantitatively allocated for initial stockage at the organizational level. This is a mandatory stockage allowance.

(2) *Special Tools, Test and Support Equipment-Section III*. A list of special tools, test and support equipment authorized for the performance of maintenance at the organizational level.

(3) *Repair Parts-Section IV*. A list of repair parts authorized for the performance of maintenance at the organizational level.

(4) *Federal Stock Number and Reference Number Index--Section V*. A list of Federal stock numbers followed by reference numbers in ascending alpha-numeric sequence, cross-referenced to index number.

3. Explanation of Columns

The following provides an explanation of columns in the tabular lists in Sections II, III, and IV:

a. *Source, Maintenance and Recoverability Codes (SMR)*.

(1) Source code indicates the selection status and source for the listed item. Source codes are:

Code	<i>Explanation</i>
P	Applied to repair parts which are stocked in or supplied from DSA/GSA or Army supply system, and authorized for use at indicated maintenance categories.

M	Applied to repair parts which are not procured or stocked but are to be manufactured at indicated maintenance categories.
A	Applied to assemblies which are not procured or stocked as such but are made up of two or more units, each of which carry individual stock numbers and descriptions and are procured and stocked and can be assembled by units at indicated maintenance categories.
X	Applied to parts and assemblies which are not procured or stocked, the mortality of which is normally below that of the applicable end item, and the failure of which should result in retirement of the end item from the supply system.
X1	Applied to repair parts which are not procured or stocked, the requirement for which will be supplied by use of the next higher assembly or components.
X2	Applied to repair parts which are not stocked. The indicated maintenance category requiring such repair parts will attempt to obtain them through cannibalization; if not obtainable through cannibalization, such repair parts will be requisitioned with supporting justification through normal supply channels.
G	Applied to major assemblies that are procured with PEMA (Procurement Equipment Missile Army) funds for initial issue only to be used as exchanges assemblies at DSU and GSU maintenance level. These assemblies will not be stocked above DSU and GSU or returned to depot supply level.

Note. Source code is not shown on common hardware items known to be readily available in Army supply channels and through local procurement.

(2) Maintenance code indicates the lowest category of maintenance authorized to install the listed item. The maintenance level code is:

Code	<i>Explanation</i>
O-----	Organizational maintenance

(3) Recoverability code indicates whether unserviceable items should be returned for recovery or salvage. Items not coded are expendable. Recoverability codes are:

Code	Explanation
R	Applied to repair parts and assemblies which are economically repairable at DSU and GSU activities and normally are furnished by supply on an exchange basis.
T	Applied to high dollar value recoverable repair parts which are subject to special handling and are issued on an exchange basis. Such repair parts normally are repaired or overhauled at depot maintenance activities.
U	Applied to repair parts specifically selected for salvage by reclamation units because of precious metal content, critical materials, high dollar value reusable casings or castings.

(4) This column also lists, below the SMR code, an index number for each item in ascending numerical sequence, which is used to locate items in the publication when the Federal stock number and/or reference number is known.

b. Federal Stock Number. This column indicates the Federal stock number for the item.

c. Description. This column indicates the Federal item name and any additional description of the item required. A part number or other reference number is followed by the applicable five- digit Federal supply code for manufacturers in parenthesis. Material required for manufacture or fabrication is identified.

d. Unit of Issue. This column indicates the unit used as a basis for issue, e.g., ea, pr, ft, yd, etc.

e. Quantity Incorporated in Unit Pack. This column indicates the actual quantity contained in the unit pack. (Not Applicable).

f. Quantity Incorporated in Unit. This column indicates the quantity of the item used in the functional group.

g. Fifteen-Day Organizational Maintenance Allowance, Column (4) of Section II and Column (6) of Section III and IV.

(1) The allowance columns are divided into four subcolumns. Indicated in each subcolumn is the quantity of items authorized for the number of equipments supported. Items authorized for use as required but not for initial stockage are identified with an asterisk in the allowance column.

(2) The quantitative allowances for organizational level of maintenance represents one initial

prescribed load for a 15-day period for the number of equipments supported. Units and organizations authorized additional prescribed loads will multiply the number of prescribed loads authorized by the quantity of repair parts reflected in the appropriate density column applicable to the number of items supported to obtain the total quantity of repair parts authorized.

(3) Organizational units providing maintenance for more than 100 of these equipments shall determine the total quantity of parts required by converting the equipment quantity to a decimal factor by placing a decimal point before the next to last digit of the number to indicate hundredths, and multiplying the decimal factor by the parts quantity authorized in the 51-100 allowance column. Example, authorized allowance for 51-100 equipments is 40; for 150 equipments multiply 40 by 1.50 or 60 parts required.

(4) Subsequent changes to allowances will be limited as follows: No change in the range of items is authorized. If additional items are considered necessary, recommendation should be forwarded to U.S. Army Mobility Equipment Command for exception or revision to the allowance list. Revisions to the range of items authorized will be made by this Command based upon engineering experience, demand data, or TAERS information.

h. Illustration, Column (8). This column is divided as follows:

(1) Figure number, column (8)(a). Indicates the figure number of the illustration in which the item is shown.

(2) Item number, column (8)(b). Indicates the callout number used to reference the item in the illustration.

4. Special Information

a. Repair parts mortality has been based on 3,000 hours of operation per year.

b. Parts which require manufacture or assembly at a category higher than that authorized for installation will indicate the source column the higher category.

c. The following publications pertain to the printing press and its components:

TM 5-3610-202-15	Operator, organizational, field and depot maintenance manual.
TM 5-3610-202-35P	DS, GS, and depot maintenance repair parts and special tool lists.

5. How to Locate Repair Parts

a. When Federal stock number or reference number is unknown:

(1) *First.* Using the table of contents, determine the functional group within which the repair part belongs.

(2) *Second.* Find the illustration covering the functional group to which the repair part belongs.

(3) *Third.* Identify the repair part on the illustration, and note the illustration figure and item number of the repair part.

(4) *Fourth.* Using the Repair Parts Listing, find the functional group to which the repair part belongs and locate the illustration figure and item number noted on the illustration.

b. When Federal stock number or reference number is known:

(1) *First.* Using the Index of Federal Stock Numbers and Reference Numbers, find the pertinent Federal stock number or reference number. This index is in ascending alpha-numeric sequence cross-referenced to an index number.

(2) *Second.* Using the Repair Part Listing, find the index number referenced in the Index of Federal Stock Numbers and Reference Numbers.

6. Abbreviations

- ampampere (s)
- crscross
- degdegree
- disdiameter
- eaeach
- GRPGroup
- hhigh (height)
- idinside diameter
- ininch (es)

- lglong (length)
- lhleft hand
- mtgmounting
- Nonumber (s)
- odoutside diameter
- PGPage (es)
- rhright hand
- thd.....thread
- thkthick
- wwide (width)
- w/with

7. Federal Supply Codes for Manufacturers

<i>Code</i>	<i>Manufacturer</i>
13591.....	Colson Corp., The
36593.....	Littleford Bros., Inc.
54123.....	Colson, Corp., The
61349.....	Ametek, Inc. United States Gauge Div.
81348.....	Federal Specifications Promulgated by General Services Administration
89025.....	Monitor Controller Div. of Atlee Corp.
93230.....	American Type Founders Co., Inc.
95879.....	Alemite Instrument Div of Steward-Warner Corp.
96906.....	Military Standards Promulgated by Standardization Div Directorate of Logistic Services DSA

8. Recommendations for Maintenance Manual Improvements

Report of errors, omissions, and recommendations for improving this publication by the individual user is encouraged. Reports should be submitted on DA Form 2028 (Recommended Changes to Publications) and forwarded direct to Commanding General, U. S. Army Mobility Equipment Command, ATTN: AMSME-MPP, 4300 Goodfellow Boulevard, St. Louis, Mo. 68120.

**SECTION II
PRESCRIBED LOAD ALLOWANCE**

(1) Federal stock number	(2) Description usable on code	(3) Qty inc in unit pack	(4) 15-Day org. maint. alw			
			(A)	(B)	(C)	(D)
			1-5	6-20	21-50	51-100
	GROUP 22-BODY CHASSIS OR HULL, AND ACCESSORY ITEMS 2202-ACCESSORIES					
3610-200-1700	PLATE, LITHOGRAPHIC PRINTING			2	3	5
3610-346-2987	CUP, SUCTION		2	4	8	15
3610-353-4536	BLADE			2	2	2
3610-4274807	TIP, SUCTION			2	2	4
3610-885-5665	WEDGE, PILE			2	8	6
3610-885-5666	TEMPLATE, BLANKET					2
	GROUP 40-ELECTRIC MOTORS 4007-DRIVE COMPONENTS					
3030-529-0394	BELT, MAIN DRIVE			2	8	6
3030-585-6756	BELT, V			2	3	6
3030-608-1682	BELT, V			2	3	6
3610-779-0642	PULLEY ASSEMBLY					2
	4010-MASTER OR AUXILIARY CON- TROL ASSEMBLY					
3610-822-1483	SWITCH, OVERLOAD				2	2
3610-885-5663	COIL, OVERLOAD				2	2
5930-843-0830	SWITCH, PUSHBUTTON				2	2
	GROUP 43-AIR AND VACUUM SYS- TEMS					
	4316-ASSEMBLED HOSE, FITTINGS, LINES, BREATHERS, FILTERS, AND TRAPS					
8610-388-3239	SUCKER FEEDER			2	3	6
3610-353-4486	SLEEVE			2	3	7
3610-374-2592	SUCKER ASSEMBLY			2	3	6
3610-427-5566	HOSE, RUBBER			2	3	7
	4317-MANIFOLD AND/OR CONTROL VALVES					
3610-0751751	VALVE ASSEMBLY					2
	4319-PUMP AND PUMP DRIVES					
3030-5284625	BELT, V			2	8	6
	GROUP 47-GAGES (NON-ELECTRI- CAL), WEIGHING AND MEASURING DEVICES					
	4701-INSTRUMENTS (SPEED AND DISTANCE)					
3610-253-2907	SPRING, HELICAL EXTENSION					2
3610-885-5664	COUNTER					2
	4702-GAGES					
6686-248-6887	GAGE, PRESSURE					2
	GROUP 65-REPRODUCTION EQUIP- MENT					
	6502-OFFSET PRESS FEEDER					
3030-267-6831	BELT, FLAT		2	2	4	9

(1) Federal stock number	(2) Description usable on code	(3) Qty inc in unit pack	(4) 15-Day org. maint. alw			
			(A)	(B)	(C)	(D)
			1-5	6-20	21-50	51-100
	6502-Continued					
3110-100-6160	BALL, BEARING				4	4
3610-374-2575	WHEEL, ASSEMBLY					2
3610-374-2576	WHEEL ASSEMBLY					2
3610-374-2595	BRUSH ASSEMBLY			2	2	2
3610-374-2596	BRUSH ASSEMBLY			2	2	2
3610-427-5960	WHEEL ASSEMBLY					2
3610-496-3444	WHEEL ASSEMBLY					2
3610-874-0569	HOLDER ASSEMBLY				2	2
3610-874-0570	HOLDER ASSEMBLY				2	2
3610-874-0571	HOLDER ASSEMBLY				2	2
3610-874-0572	HOLDER ASSEMBLY				2	2
	6503-OFFSET MAIN PRESS ASSEMBLY					
	3610-374-2594 BRUSH ASSEMBLY				2	2
	6504-OFFSET PRESS INKER					
3610-608-1687	ROLLER ASSEMBLY			2	2	4
3610-628-0531	ROLLER			2	8	5
3610-885-6688	ROLLER					2
3610-886-5690	ROLLER				2	2
3610-885-8422	ROLLER ASSEMBLY					2
	6506-OFFSET PRESS WATER SYSTEM					
3610-885-8423	ROLLER				2	2
3610-885-8424	ROLLER			2	2	2
	GROUP 99-PARTS PECULIAR					
	9901-MULTI-LISTED PARTS					
6110-779-0665	STARTER				2	2

(1) SMR CODE	(2) FEDERAL STOCK NUMBER	(3) DESCRIPTION USABLE ON CODE	(4) UNIT OF MEAS	(5) QTY INC IN UNIT	(6) 15-DAY ORGANIZATIONAL MAINTENANCE ALW				(7) ILLUS- TRATION	
					(a) 1-5	(b) 6-20	(c) 21-50	(d) 51-100	(a) FIG. NO.	(b) ITEM NO.
00001		SECTION III - SPECIAL TOOLS, TEST AND SUPPORT EQUIPMENT FOR ORGANIZATIONAL MAINTENANCE								
00002		GROUP 26 - TOOL AND TEST EQUIPMENT								
		2604 - SPECIAL TOOLS								
		NOTE: If these items are not components of authorized TA or TOE tool sets, one each is authorized per using units								
P OR 00003		WRENCH : blanket, cadmium plated, electrofilmed finish 42064B (93230)	EA	1	*	*	*	*		
P OR 00004	3610-974-9543	WRENCH : pin, cadmium plated, electrofilmed finish 42024B (93230)	EA	1	*	*	*	*		
P OR 00005	3610-976-3042	WRENCH, PLATE CYLINDER: plate cylinder adjusting 681DP530 (93230)	EA	1	*	*	*	*		
X 1 00006		HANDLE : plate cylinder adjusting 210DP233 (93230)	EA	1						
X1 00007		PINION: plate cylinder adjusting 181DP530 (93230)	EA	1						
		SECTION IV - REPAIR PARTS FOR ORGANIZATIONAL MAINTENANCE								
00008		GROUP 1822-BODY, CAB, HOOD, HULL								
00009		1808 - BOXES								
X2 0 00010		BOX, HAND TOOLS: 21 1/4 in. lg, 8 3/4 in. by 7 1/8 in. h, w/tray 499DP813 (93230)	EA	1						
00011		GROUP 22 - BODY CHASSIS OR HULL, AND ACCESSORY ITEMS								
00012		2202 - ACCESSORIES								
P 0 00013	3610-353-4536	BLADE : wash-up machine 79DP30 (93230)	EA	3	*	2	2	2		
X2 0 00014		CONNECTOR, ELECTRICAL : 3 phase, round portable, female 492DP813 (93230)	EA	1						
X2 0 00015		COVER, ROLLER: form dampening 135DP126 (93230)	EA	3						
P 0 00016	3610-346-2987	CUP, SUCTION : rubber (PAPER) 49873 (93230)	EA	24	2	4	8	15		
X2 0 00017	3610-937-3820	HANDLE, TRUCK: press, electrofilmed finish 21032E (93230)	EA	1						
X2 0 00018		HOLDER : washup machine 449DP836 (93230)	EA	1						
X2 0 00019	2590-972-7900	JACK: press lift 6712X41 (54123)	EA	1						
P 0 00020	3610-542-2508	OFFSET BLANKET, RUBBER PRINTING, PRESS AND DUPLICATING: MACHINE: cut, 27-14 in. around blanket cylinder, 29-1/2 in., 0.055 in. thk	EA	1	*	*	*	*		
P 0 00021	3610-200-1700	PLATE, LITHOGRAPHIC PRINTING, METAL : aluminum, ungrained plain ends, sensitized, 29-1/2 in. lg, 27-1/4 in. w, 0.005 to 0.010 in. thk, w/instruction sheets and processing chemicals 100 per package RRP400 (81348)	PG		*	*	*	*		
P 0 00022	3610-200-1700	PLATE, LITHOGRAPHIC PRINTING, METAL: aluminum, ungrained, plain ends, unsensitized, 29-1/2 in. lg, 27-1/4 in. w, 0.012 in. thk RRP400 (81348)	EA	1	*	2	3	5		
P 0 00023	3610-885-5666	TEMPLATE, BLANKET 499DP852 (93230)	EA	1	*	*	*	2		

(1) SMR CODE	(2) FEDERAL STOCK NUMBER	(3) DESCRIPTION REF NUMBER & MFR USABLE ON CODE	(4) UNIT OF MEAS	(5) QTY INC IN UNIT	(6) 15-DAY ORGANIZATIONAL MAINTENANCE ALW				(7) ILLUS- TRATION	
					(a) 1-5	(b) 6-20	(c) 21-50	(d) 51-100	(a) FIG. NO.	(b) ITE M NO.
P 0 00024	3610-427-5807	TIP, SUCTION: metal, paper feed (cardboard) 436DC57 (93230)	EA	6	*	2	2	4		
P 0 00025	3610-885-5665	WEDGE PILE: plastic 499DP846 (93230)	EA	6	*	2	3	6		
00026		2210 - DATA PLATES								
X2 0 00027		PLATE., IDENTIFICATION: electrofilmed finish 336X566 (93230)	EA	2						
X2 0 00028		PLATE, IDENTIFICATION: floating blast swivel 336X613 (93230)	EA	1						
X2 0 00029		PLATE, IDENTIFICATION: lift jack 60072 (54123)	EA	1						
X2 0 00030		PLATE, IDENTIFICATION: serial no. and model 33584 (93230)	EA	1						
X2 0 00031		PLATE, INSTRUCTION: lubrication 336JF792 (93230)	EA	1						
X2 0 00032		PLATE, INSTRUCTION: lubrication, vibrator gear housing 336DP835 (93230)	EA	1						
X2 0 00033		PLATE, INSTRUCTION: lubrication, vibrator gear housing 336JP235 (93230)	EA	1						
X2 0 00034		PLATE, NAME 336JP2235 (93230)	EA	1						
X2 0 00035		SCREW DRIVE: identification plate, No. 2, 3/16 in. lg, electrofilmed finish 2372E (93230)	EA	2	SEE	GRP	9901			
X2 0 00036		SCREW, DRIVE instruction plate mtg, No. 2, 3/16 in. lg, electrofilmed finish 2372L (93230)	EA	2	SEE	GRP	9901			
X2 0 00037		SCREW, DRIVE instruction plate mtg, No. 6, 5/16 in. lg, electrofilmed finish 2370E (93230)	EA	4	SEE	GRP	9901			
X2 0 00038		SCREW, DRIVE: instruction plate, No. 2, 3/16 in. lg, electrofilmed finish 2372E (93230)	EA	2	SEE	GRP	9901			
X2 0 00039		SCREW, DRIVE: lift jack identification plate mtg 20001(13591)	EA	2						
X2 0 00040		SCREW: plate mtg, No. 6, 5/16 in. lg, electrofilmed finish 2370E(93230)	EA	4	SEE	GRP	9901			
X2 0 00041		SCREW: plate mtg, No. 6, 5/16 in. lg, electrofilmed finish 2370E (93230)	EA	4	SEE	GRP	9901			
00042		GROUP 40 - ELECTRIC MOTORS								
00043		4007 - DRIVE; COMPONENTS								
P 0 00044	3030-529-0394	BELT, MAIN DRIVE: 71 in. outside circumference W39257C(96906)	EA	1	*	2	3	6	13	14
P 0 00045	3030-585-5756	BELT, V: intermediate drive, 54-3/4 in. outside circumference (NSOPRE) 76DP106 (93230)	EA	1	*	2	3	6	1	1
P 0 00046	3030-608-1682	BELT, V PRESS DRIVE MOTOR: 32-3/4 in. outside circumference (NEOPRENE) 76DH99 (93230)	EA	1	*	2	3	6	1	33
X2 0 00047		FITTING, LUBRICATION: control knob 493DP53 (93230)	EA	1						

(1) SMR CODE	(2) FEDERAL STOCK NUMBER	(3) DESCRIPTION REF NUMBER & MFR USABLE ON CODE	(4) UNIT OF MEAS	(5) QTY INC IN UNIT	(6) 15-DAY ORGANIZATIONAL MAINTENANCE ALW				(7) ILLUS- TRATION	
					(a) 1-5	(b) 6-20	(c) 21-50	(d) 51-100	(a) FIG. NO.	(b) ITE M NO.
X2 0 00048	3610-779-0642	FITTING, LUBRICATION: pulley bracket 439DP52 (93230)	EA	1						
P 0 00049		PULLEY ASSEMBLY: adjusto-matic 500Pt& (93230)	EA	1	*	*	*	2	12	1
X2 0 00050		FITTING, LUBRICATION: pulley, 65 deg, 1/8-27 thd size 493DP57 (93230)	EA	1						
X2 0 00051		PULLEY ASSEMBLY: intermediate 843DP265 (93230)	EA	1					1	2
X2 0 00052		PULLEY: blower motor drive 343X81(93230)	EA	1					1	32
X2 0 00053		PULLY, GROOVE: press drive motor 343DP262 (93230)	EA	1					1	34
X2 0 00054		SCREW, CAP, HEXAGON HEAD: adjusto-matic pulley mtg, 3/8-16 thd size, 1-1/2 in. lg, crs, cadmium plated, electrofilmed finish 1962B (93230)	EA	2					12	2
X2 0 00055		SCREW, CAP, HEXAGON HEAD: pulley to drive pinion shaft 2085 (93230)	EA	1						
X2 0 00056		SETSCREW, SOCKET HEAD: pulley bracket 2289 (93230)	EA	1					1	3
X2 0 00057		WASHER, FLAT: adjusto-matic pulley mtg, 25/64 in. id, 7/8 in. od, 1/e in. thk, crs, electrofilmed finish 4585c (93230)	EA	2					12	3
X2 0 00058		WASHER, FLAT: delivery idler gear stud, 3/8 in. id, 1-1/2 in. od, 1/8 in. thk, electrofilmed finish 4593B (93230)	EA	1						
X2 0 00059		WASHER, FLAT: intermediate pulley mtg track, 17/32 in. id, 2 in. od, 3/32 in. thk 4604E (93230)	EA	2						
00060		4010 - MASTER OR AUXILIARY CONTROL ASSEMBLY								
X2 0 00061		BUTTON, STOP, RED, MUSHROOM: feeder station 492 JP8 (93230)	EA	1					1	24
P 0 00062	3610-885-5663	COIL, OVERLOAD, BLOWER STARTER: 4.5 amp 493AL175(93230)	EA	2	*	*	2	2	1	4
X2 0 00063		GASKET: switch plate 499JP921(93230)	EA	1					1	21
X2 0 00064		PLATE: delivery switch mtg, electrofilmed finish 336DP821(93230)	EA	1					1	38
X2 0 00065		PLATE: feeder station button 336DP820 (93230,	EA	1					1	22
X2 0 00066		PUSHBUTTON: stop, red 492DP81 (93230)	EA	1					1	25
X2 0 00067		SCREW, CAP, SOCKET HEAD: delivery switch mtg plate mtg 2100 (93230)	EA	2					1	37
X2 0 00068		SCREW, CAP, SOCKET HEAD: feeder station button plate mtg 2069 (93230)	EA	6					1	23
X2 0 00069		SCREW, CAP, SOCKET HEAD: press and blower starter mtg 2069(93230)	EA	6					1	6
X2 0 00070		SCREW, CAP, SOCKET HEAD: switch mtg 1741 (93230)	EA	4					1	36
X2 0 00071		SCREW, MACHINE: button head, press starter, 1/4-20 thd size, 1/2 in. lg, electrofilmed finish 1721E (93230)	EA	4					1	11

(1) SMR CODE	(2) FEDERAL STOCK NUMBER	(3) DESCRIPTION USABLE ON CODE	(4) UNIT OF MEAS	(5) QTY INC IN UNIT	(6) 15-DAY ORGANIZATIONAL MAINTENANCE ALW				(7) ILLUS- TRATION	
					(a) 1-5	(b) 6-20	(c) 21-50	(d) 51-100	(a) FIG. NO.	(b) ITEM NO.
X2 0 00072		SPACER: delivery switch mtg plate 3JP178 (93230)	EA	2					1	39
P 0 00073	6110-779-0665	STARTER: blower motor 633VKkil1F (89025)	EA	1	SEE	GRP	9901		1	12
P 0 00074	6110-779-0665	STARTER: press motor 633VKB41F(89025)	EA	1	SEE	GRP	9901		1	7
P 0 00075	3610-820-2798	SWITCH ASSEMBLY, STATION: delivery 992DP85 (93230)	EA	1					1	35
P 0 00076	3610-822-1483	SWITCH, OVERLOAD: blower starter, 13 amp 493AL172 (93230)	EA	2				2	2	13
P 0 00077	5930-843-0830	SWITCH, PUSHBUTTON: start, press and blower 492DP82 (93230)	EA	2			2	2	1	27
X2 0 00078		SWITCH, SELECTOR: 'Jog-safe-run", feeder station 492JP88 (93230)	EA	1					1	26
00079		GROUP 42 - ELECTRICAL EQUIPMENT								
00080		4216 - MISCELLANEOUS WIRING, FITTINGS, -ETC.								
X2 0 00081		BUSHING, ELECTRICAL CONDUIT: blower and press starter, 3/4 in. 48943 (93230)	EA	1					1	10
X2 0 00082		BUSHING: 1 in., nipple to starter tg 48912(93230)	EA	2					1	9
X2 0 00083		LOCKNUT: 1 in., electrical conduit 48904(93230)	EA	2					1	8
X2 0 00084		NIPPLE, CHAS.: 3/4 in. blower and press starter 48955 (93230)	EA	2					1	5
X2 0 00085		RECEPTACLE ASSEMBLY: electrical, covered male, 4 pole, 40 ap 492DP100 (93230)	EA	11					1	42
X2 0 00086		SCREW, CAP, HEXAGON HEAD: power receptacle mtg, 5/16-18 thd size, 5/8 in. lg, electrofilmed finish 1937S (93230)	EA	4					1	43
00087 00088		GROUP 43 - AIR AND VACUUM SYSTEMS 4316 - ASSEMBLED HOSE, FITTINGS, LINES, BREATHERS, FILTERS, AND TRAPS								
X2 0 00089		BLOCK, SUPPORT: suction pipe, electrofilmed finish 80DS65L (93230)	EA	1					5	3
X2 0 00090		BRACKET, BLAST TUBE: electrofilmed finish 9002891 (93230)	EA	3					4	2
X2 0 00091		BUSHING, PIPE: air blower valve block, male end, 1-11 1/2 thd size, female end, 3/4-14 thd size, electrofilmed finish 618. (93230)	EA	1	SEE	GRP	9901		12	10
X2 0 00092		BUSHING, PIPE: pump to elbow, male end, 1-11 1/2 thd size, female end, 3/4-14 thd size, electrofilmed finish 618E (93230)	EA	1	SEE	GRP	9901		12	10
X2 0 00093		CLAMP, HOSE: blast nozzle 118DP154 (93230)	EA	2					1	18
X2 0 00094		CLIP, HOSE: air valve assembly hose, electrofilmed finish 11920E (93230)	EA	2					5	12
12 0 00095		ELBOW, PIPE: air block nipple both ends female, 3/8-18 thd size, electrofilmed finish 628E (93230)	EA	1					5	2
X2 0 00096		ELBOW, PIPE: pump tank, one end male, other end female, 1-11 1/2 thd size, electrofilmed finish 647E (93230)	EA	1						

(1) SMR CODE	(2) FEDERAL STOCK NUMBER	(3) DESCRIPTION USABLE ON CODE	(4) UNIT OF MEAS	(5) QTY INC IN UNIT	(6) 15-DAY ORGANIZATIONAL MAINTENANCE ALW				(7) ILLUS- TRATION	
					(a) 1-5	(b) 6-20	(c) 21-50	(d) 51-100	(a) FIG. NO.	(b) ITEM NO.
X2 0 0009		ELBOW, PIPE: pump to line, one end male, other end female, 3/4-14 thd size, electrofilmed finish 646E (93230)	EA	1					12	9
X2 0 00098		ELBOW, PIPE: suction block, 45 deg, both ends female, 3/8-18 thd size, electrofilmed finish 640E (93230)	EA	1					2	6
X2 0 00099		ELBOW, PIPE: support block, 90 deg, both ends female, 3/8-18 thd size, electrofilmed finish 628E (93230)	EA	1	SEE	GRP	9901		2	3
M 0 00100		HOSE, RUBBER : air valve 223DP82 (93230) MANUFACTURE FROM:	EA	1					1	41
F 0 00101	4720-278-4889	HOSE, RUBBER (35 in. required) 50 (36593)	FT		SEE	GRF	9501			
M 0 00102		HOSE, RUBBER: air valve to suction block 223JP83 (93230) MANUFACTURE FROM:	EA	1					1	40
P 0 00103	4720-278-4915	HOSE, RUBBER (12 in. required)	FT		SEE	GRP	9501			
P 0 00104		HOSE, RUBBER: blast nozzle, rear end 223DP79 (93230) MANUFACTURE FROM:	EA	1					5	9
F 0 00105	4720-278-4889	HOSE, RUBBER (3 ft 10 in. required) 50 (36593)	FT		SEE	GRP	9501			
M 0 00106		HOSE, RUBBER: blast nozzle, right side wale 223DP84 (93230) MANUFACTURE FROM:	EA	1					5	10
P 0 00107	4720-278-4889	HOSE, RUBBER (8 ft 1 in. required) 50 (36593)	FT		SEE	GRP	9501			
M 0 00108		HOSE, RUBBER: front blast nozzle 2230P80 (93230) MANUFACTURE FROM:	EA	1					1	14
Y 0 00109	4720-278-4889	HOSE, RUBBER (20 in. required) 50 (36593)	FT		SEE	GRP	9501			
M 0 00110		HOSE, RUBBER: front center blast nozzle 223DP81 (93230) MANUFACTURE FROM:	EA	1					1	1
F 0 00111	4720-278-4889	HOSE, RUBBER (31 in. required) 50 (36593)	FT		SEE	GRP	9501			
M 0 00112		HOSE, RUBBER: front pivot blast nozzle 223vP85 (93230) MANUFACTURE FROM:	EA	1					1	16
P 0 00113	4720-278-4889	HOSE, RUBBER (45 in. required) 50 (36593)	FT		SEE	GRP	9501			
M 0 00114		HOSE, RUBBER: plate guide roller shaft 223DP91 (93230) MANUFACTURE FROM:								
F 0 00115	4720-238-8300	HOSE, RUBBER (31 in. required)	FT		SEE	GRP	9501			
F 0 00116	3610-427-5566	HOSE, RUBBER: sucker tube 22311 (93230)	EA	6	*	2	3	7	5	7
M 0 00117		HOSE, RUBBER: suction support block 2230P90 (93230) MANUFACTURE FROM:	EA	1					2	1
P 0 00118	4720-278-4889	HOSE, RUBBER (3-1/4 in. required) 50 (36593)	FT		SEE	GRP	9501			

(1) SMR CODE	(2) FEDERAL STOCK NUMBER	(3) DESCRIPTION REF NUMBER & MFR USABLE ON CODE		(4) UNIT OF MEAS	(5) QTY INC IN UNIT	(6) 15-DAY ORGANIZATIONAL MAINTENANCE ALW				(7) ILLUS- TRATION		
						(a) 1-5	(b) 6-20	(c) 21-50	(d) 51-100	(a) FIG. NO.	(b) ITE M NO.	
						M 0 00119	4720-278-4915	HOSE, RUBBER: trip valve 223DF83 (93230) MANUFACTURE FROM:		EA	1	
P 0 00120	HOSE, RUBBER (12 in. required)		FT		SEE	GRP		9501				
X2 0 00121	NIPPLE, HOSE : air block pipe, one end male, 3/8-18 thd size, 2 in. lg, electrofilmed finish 719E (93230)		EA	1	SEE	GRP		9901			5	1
X2 0 00122	NIPPLE, HOSE: hose connection to support block, one end male, 3/8-18 thd size, 2 in. lg, electrofilmed finish 719E (93230)		EA	1	SEE	GRP		9901			2	2
X2 0 00123	NIPPLE, HOSE ; hose connection to support block, one end male, 3/8-18 thd size, 2 in. lg, electrofilmed finish 719E (93230)		EA	1	SEE	GRP		9901			2	5
X2 0 00124	NIPPLE, HOSE: hose to air valve, 3/8-18 thd size 2 in. lg, electrofilmed finish 719E (93230)		EA	1	SEE	GRP		9901			12	15
X2 0 00125	NIPPLE, PIPE: air pump, 3/4-18 thd size, 8 in. lg, electrofilmed finish 691E (93230)		EA	1							12	13
X2 0 00126	NIPPLE, PIPE: suction block to elbow, 1/4-18 thd size, 1 in. lg, electrofilmed finish 693E (93230)		EA	1							2	7
X2 0 00127	NIPPLE, PIPE: suction valve block, 3/8-18 thd size, 2-1/2 in. lg, electrofilmed finish 658E (93230)		EA	1							2	4
X2 0 00128	NIPPLE, TUBE,: air line tee to hose, 3/4-1/4 thd size, 2-1/2 in. lg, electrofilmed finish 732E (93230)		EA	2	SEE	GRP		9901			12	11
X2 0 00129	NIPPLE, TUBE: reducer, 3/4-1/4 thd size, 2-1/2 in. lg, electrofilmed finish 732E (93230)		EA	1	SEE	GRP		9901				
X2 0 00130	NOZZLE, AIR, FLAT SPRAY: center blast tube 436DC130 (9320)		EA	1							4	3
X2 0 00131	NOZZLE, SPRAY: side blast tube 436DC56 (93230)		EA	2							4	1
X2 0 00132	NUT, SELF-LOCKING, HEXAGON: hose clamp mtg. 10DP123		EA	2							1	19
X2 0 00133	PIN, TAPERED, PLAIN: suction pipe support block, 0.193 in. dia, 2 in. lg, electrofilmed finish 1523E (93230)		EA	1							5	14
X2 0 00134	PIPE: air block, electrofilmed finish 708E (93230)		EA	1							5	6
X2 0 00135	SCREW, CAP, HEXAGON HEAD: blast tube bracket mtg, 1/4-28 thd size, 3/4 in. cadmium plated, electrofilmed finish 19F30B (93230)		EA	3							4	9
X2 0 00136	SCREW, MACHINE: blast hose clip mtg, 1/4-28 thd size, 3/8 in. lg, electrofilmed finish 17F74E (93230)		EA	2							5	11
X2 0 00137	SCREW, MACHINE: hose clamp mtg. No. 10-32 thd size, 1-1/2 in. lg, electrofilmed finish 1767E (93230)		EA	2						1	17	
X2 0 00138	SETSCREW, SOCKET HEAD: support block 2289 (93230)		EA	1						5	13	

(1) SMR CODE	(2) FEDERAL STOCK NUMBER	(3) DESCRIPTION REF NUMBER & MFR USABLE ON CODE		(4) UNIT OF MEAS	(5) QTY INC IN UNIT	(6) 15-DAY ORGANIZATIONAL MAINTENANCE ALW				(7) ILLUS- TRATION	
						(a) 1-5	(b) 6-20	(c) 21-50	(d) 51-100	(a) FIG. NO.	(b) ITE M NO.
						X2 0 00139		SETScrew, SQUARE HEAD: blast tube bracket, 3/8-16 thd size, 3/4 in. lg, cadmium plated, electrofilmed finish 23DC42B (93230)	EA	3	
X2 0 00140		SETScrew: suction pipe support block 2289 (93230)	EA	2					5	4	
P 0 00141	3610-353-4486	SLEEVE: sucker tube, rubber hose, red 223DC8 (93230)	EA	6	*	2	3	7	5	8	
X2 0 00142		SPRING, HELICAL, TORSION: suction hose 28DP225 (93230)	EA	6					5	5	
P 0 00143	3610-374-2592	SUCKER ASSEMBLY: fixed, electrofilmed finish 936DC58E (93230)	EA	6	*	2	3	6	4	7	
X2 0 00144		BLOCK, FEEDER: electrofilmed finish 80DC74E (93230)	EA	6					3	4	
X2 0 00145		SCREW, CAP, HEXAGON HEAD: sucker block, 1/4-28 thd size, 1/2 in. lg, cadmium plated, electrofilmed finish (SPECIAL) 19F28B (93230)	EA	6					3	1	
X2 0 00146		SCREW, KNURLED: sucker block adjusting, 1/4-28 thd size, 3/4 in. lg, electrofilmed finish 21F62E (93230)	EA	6					3	3	
P 0 00147	3610-338-3239	SUCKER FEEDER: paper 436DC58 (93230)	EA	6	*	2	3	6	3	2	
X2 0 00148		TEE, PIPE: air line, 2 nd and 3 rd ends female, 3/4-1/4 thd size, 1 st end female, 3/8-18 thd size, electrofilmed finish 730E (93230)	EA	1					12	14	
00149		4317 - MANIFOLD AND/OR CONTROL VALVES									
X2 0 00150		BLOCK ASSEMBLY: suction valve 723DP90 (93230)	EA	1							
X2 0 00151		BLOCK, SUCTION: electrofilmed finish 80AL235E (93230)	EA	1					2	16	
X2 0 00152		COCK, AIR: pressure gage, 1/8-27 thd size 450DE70 (93230)	EA	1	SEE	GRP	4702				
X2 0 00153		COUPLING, PIPE: air cock, one end female, 1/4-18 thd size, other end female, 1/8-27 thd size, electrofilmed finish 798E (93230)	EA	1	SEE	GRP	4701				
X2 0 00154		ELBOW, PIPE: pressure gage, one end male, other end female, 1/4-18 thd size, electrofilmed finish 642E (93230)	EA	1	SEE	GRP	4702				
X2 0 00155		ELBOW, PIPE: suction block, 45 deg, both ends female, 3/8-18 thd size, electrofilmed finish 640E (93230)	EA	1	SEE	GRP	4316				
X2 0 00156		ELBOW, PIPE: suction block, 90 deg. both ends female, 3/8-18 thd size, electrofilmed finish 628E (93230)	EA	1	SEE	GRP	4316				
P 0 00157	6685-248-6887	GAGE, PRESSURE: suction valve block assembly 47104-0 (61349)	EA	1	SEE	GRP	4702				
M 0 00158		HOSE, RUBBER: suction block support 223DP90 (93230)	EA	1	SEE	GRP	4316				
X2 0 00159		NIPPLE, PIPE: Hose connection to support block, one end thd male, 3/8-18 thd size, 2 in lg, electrofilmed finish 719E (93230)	EA	1	SEE	GRP	4316				
X2 0 00160		NIPPLE, PIPE: suction block to elbow, 1/4-18 thd size, 1 in. lg, electrofilmed finish 693E (93230)	EA	1	SEE	GRP	4316				

(1) SMR CODE	(2) FEDERAL STOCK NUMBER	(3) DESCRIPTION REF NUMBER & MFR USABLE ON CODE	(4) UNIT OF MEAS	(5) QTY INC IN UNIT	(6) 15-DAY ORGANIZATIONAL MAINTENANCE ALW				(7) ILLUS- TRATION	
					(a) 1-5	(b) 6-20	(c) 21-50	(d) 51-100	(a) FIG. NO.	(b) ITE M NO.
X2 0 00161	3030-528-4625	NIPPLE, PIPE: suction valve block, 1/8-27 thd size, 3/4 in. lg, electrofilmed finish 714E (93230)	EA	1	SEE	GRP	4702			
X2 0 00162		NIPPLE, PIPE: suction valve block, 3/8-18 thd size, 2-1/2 in. lg, electrofilmed finish 658E (93230)	EA	1	SEE	GRP	4316			
X2 0 00163		SCREW, MACHINE: spring mtg, No. 8-32 thd size, 5/16 in. lg, electrofilmed finish 1705E (93230)	EA	1					2	13
X2 0 00164		SPRING, INDICATOR 29AL103 (93230)	EA	1					2	14
X2 0 00165		VALVE ASSEMBLY: suction relief, electrofilmed finish 950AL73E (93230)	EA	1	*	*	*	2	2	15
X2 0 00166		SCREW, CAP, SOCKET HEAD: suction valve block assembly mtg 02F57 (93230)	EA	2						
00167		4319 - PUMPS AND PUMP DRIVES								
P 0 00168		BELT, V: blower pump MS39243-26 (96906)	EA	1	*	2	3	6	1	31
X2 0 00169		KEY, MACHINE: pump pulley, 1/4 in. square, 1.385 in. lg, electrofilmed finish 866E (93230)	EA	1					12	12
X2 0 00170		PULLEY, GROOVED: air blower pump, electrofilmed finish 343DC82E (9323)	EA	1					12	8
X2 0 00171		SETSCREW, SOCKET HEAD: pulley 2284 (93230)	EA	1					12	7
00172		4320 - AIR VACUUM AND/OR MANUAL CONTROLS								
X2 0 00173		KNOB; valve adjusting 210DP237 (93230)	EA	3					1	28
X2 0 00175		SETSCREW, SOCKET HEAD: knob mtg 2234 (93230)	EA	3					1	29
00176		GROUP 47 - GAGES (NON-ELECTRICAL), WEIGHING AND MEASURING DEVICES								
00177		4701 - INSTRUMENTS (SPEED AND DISTANCE)								
P 0 00178	3610-885-5664 COUNTER 495DE11 (93230)	EA	1	*	*	*	2			
X2 0 00179	KNOB ASSEMBLY: counter lever 710DP241 (93230)	EA	1					10	13	
X2 0 00180	KNOB: counter lever 210DP241 (93230)	EA	1							
X2 0 00181	SETSCREW, SOCKET HEAD: counter knob 2289 (93230)	EA	1							
X2 0 00182	SETSCREW, SQUARE HEAD: counter knob 2258 (93230)	EA	1							
X2 0 00183	SHAFT, KNOB: counter 370DP322 (93230)	EA	1							
X2 0 00184	LINK, counter spring 265DP367 (93230)	EA	1					10	12	
X2 0 00185	3610-253-2907 SPRING, HELICAL EXTENSION: counter 28DC65 (93230)	EA	1	*	*	*	2	10	11	

(1) SMR CODE	(2) FEDERAL STOCK NUMBER	(3) DESCRIPTION REF NUMBER & MFR USABLE ON CODE	(4) UNIT OF MEAS	(5) QTY INC IN UNIT	(6) 15-DAY ORGANIZATIONAL MAINTENANCE ALW				(7) ILLUS- TRATION	
					(a) 1-5	(b) 6-20	(c) 21-50	(d) 51-100	(a) FIG. NO.	(b) ITE M NO.
00186		4702 - GAGES								
X2 0 00187		COCK, AIR: pressure gage, 18-27 thd size 450DE70 (93230)	EA	1					2	11
X2 0 00188		COUPLING, PIPE: air cock, one end female, 1/4-18 thd size, other end female, 1/8-27 thd size, electrofilmed finish 798E (93230)	EA	1					2	11
X2 0 00189		ELBOW, PIPE: pressure gage, one end male, other end female, 1/4-18 thd size, electrofilmed finish 642E (93230)	EA	1					2	9
P 0 00190	6685-248-6887	GAGE, PRESSURE: suction valve block assembly 47104-0 (61349)	EA	1	*	*	*	2	2	8
P 0 00191		NIPPLE, PIPE: suction valve block, 18-27 thd size, 3/4 in. lg, electrofilmed finish 714E (93230)	EA	1					2	12
00192		GROUP 65 - REPRODUCTION EQUIPMENT								
00193		6501 - OFFSET PRESS PILE FEEDER								
X2 0 00194		BOARD ASSEMBLY, FEEDER PILE 970DP65 (93230)	EA	1					4	4
X2 0 00195		BOARD, FEEDER PILE: ash wood, antique wax finish 470DP65 (93230)	EA	1						
X2 0 00196		SCREW, FLAT HEAD: wood No. 8, 1 in. lg, electrofilmed finish 2611E (93230)	EA	4						
X2 0 00197		YOKE, FEEDER PILE BOARD 480DP36 (93230)	EA	2						
X2 0 00198		FITTING, LUBRICATION: camshaft bearing 1613B (95879)	EA	2						
X2 0 00199		HANDWHEEL ASSEMBLY: electrofilmed finish 710DP235 (93230)	EA	1					4	6
X1 00200		HANDLE, ERVOOLVING: crank 210DP235 (93230)	EA	1						
X1 00201		HANDWHEEL: electrofilmed finish 46153E (93230)	EA	1						
X2 0 00202		PIN, TAPERED, PLAIN: handwheel, 0.219 in. dia, 1-1/4 in. lg, electrofilmed finish 1529E (93230)	EA	1					4	5
X2 0 00203		WASHER, FLAT: handwheel spacer, 0.765 in. id, 1.312 in. od, 0.032 in. thk, electrofilmed finish 4502E (93230)	EA	1	SEE	GRP9	9901			
		6502 - OFFSET PRESS FEEDER								
P 0 00205	3030-267-6831	BELT, FLAT; conveyor tape 76DC17 (93230)	EA	4	2	2	4	9	10	15
P 0 00206	3610-374-2595	BRUSH ASSEMBLY: register, lh 999DP911 (93230) (Components same as BRUSH ASSEMBLY, Stock No. 3610- 374-2596)	EA	1	*	2	2	2	10	10
P 0 00207	3610-374-2596	BRUSH ASSEMBLY: register, rh 999DP914 (93230)	EA	1	*	2	2	2	10	5
X2 0 00208		BRACKET: feed tape brush, electrofilmed finish 90DC337E (93230)	EA	2					6	3
X2 0 00209		BRUSH REGISTER 499dh619 (93230)	EA	4					6	5

(1) SMR CODE	(2) FEDERAL STOCK NUMBER	(3) DESCRIPTION REF NUMBER & MFR USABLE ON CODE	(4) UNIT OF MEAS	(5) QTY INC IN UNIT	(6) 15-DAY ORGANIZATIONAL MAINTENANCE ALW				(7) ILLUS- TRATION	
					(a) 1-5	(b) 6-20	(c) 21-50	(d) 51-100	(a) FIG. NO.	(b) ITE M NO.
X2 0 00210		PIN, COTTER: brush stud 1104 (93230)	EA	6					6	4
X2 0 00211		SETSCREW, SOCKET HEAD: brush bracket 22F66 (93230)	EA	2					6	2
X2 0 00212		SETSCREW, SQUARE HEAD: brush bracket, 1/4-28 thd size, 1/2 in. lg, cadmium plated, electrofilmed finish 23F41B (93230)	EA	2					6	1
X2 0 00213		STUD: brush feed tape, electrofilmed finish 404DC263E (93230)	EA	2					6	6
X2 0 00214		FITTING, LUBRICATION: conveyor shaft 4390P54 (93230)	EA	2					10	1
P 0 00215	3610-874-0571	HOLDER ASSEMBLY, BALL: electrofilmed finish 720DE97E (93230) (Same as HOLDER ASSEMBLY Stock No. 3610-874-0570, except where individual components are annotated)	EA	2	*	*	2	2	10	9
P 0 00216	3610-874-0572	HOLDER ASSEMBLY, BALL: lh, electrofilmed finish 720DE98E (93230) (Same as HOLDER ASSEMBLY Stock No. 3610-874-0570, except where individual components are annotated)	EA	2	*	*	2	2	10	6
P 0 00217	3610-874-0570	HOLDER ASSEMBLY, BALL: lh, glass 720DP107 (93230)	EA	2	*	*	2	2	10	6
P 0 00218	3110-100-6160	BALL, BEARING: guide 6001 (93230) (Used with HOLDER ASSEMBLY, Stock No. 3610-874-0572, only)	EA	2	*	*	2	2	9	6
X2 0 00219		BALL: glass, guide 59AG1 (93230) (Used with HOLDER ASSEMBLY, Stock No. 3610-874-0570, only)	EA	2					9	6
X2 0 00220		HOLDER, BALL: electrofilmed finish 220DE98E (93230)	EA	4					9	8
X2 0 00221		RING, RETAINING: guide ball, electrofilmed finish 119AG5E (93230)	EA	4	SEE	GRP	9901		9	5
X2 0 00222		SETSCREW, SQUARE HEAD: holder, 1/4-20 thd size, 5/8 in. lg, cadmium plated electrofilmed finish 2364B (93230)	EA	4	SEE	GRP	9901		9	7
P 0 00223	3610-874-0569	HOLDER ASSEMBLY, BALL: rh, glass 720DP106 (93230)	EA	2	*	*	2	2	10	9
P 0 00224	3110-100-6160	BALL, BEARING: guide 6001 (93230) (Used with HOLDER ASSEMBLY, Stock No. 3610-874-0571, only)	EA	2	*	*	2	2	9	2
X2 0 00225		BALL: glass, guide 59AG1 (93230) (Used with HOLDER ASSEMBLY, Stock No. 3610-874-0569, only)	EA	2					9	2
X2 0 00226		HOLDER: guide ball, electrofilmed finish 220DE97E (93230)	EA	4					9	4
X2 0 00227		RING, RETAINING: guide ball, electrofilmed finish 119ag5e (93230)	EA	4	SEE	GRP	9901		9	1
X2 0 00228		SETSCREW, SQUARE HEAD: holder, 1/4-20 thd size 5/8 in. lg, cadmium plated, electrofilmed finish 2364B (93230)	EA	4	SEE	GRP	9901		9	3
X2 0 00229		LATCH ASSEMBLY: conveyor guide holdup 760DP92 (93230)	EA	1					10	3
X2 0 00230		LATCH: conveyor guide holdup 260DP92 (93230)	EA	1						

(1) SMR CODE	(2) FEDERAL STOCK NUMBER	(3) DESCRIPTION USABLE ON CODE	(4) UNIT OF MEAS	(5) QTY INC IN UNIT	(6) 15-DAY ORGANIZATIONAL MAINTENANCE ALW				(7) ILLUS- TRATION	
					(a) 1-5	(b) 6-20	(c) 21-50	(d) 51-100	(a) FIG. NO.	(b) ITEM NO.
X2 0 00231	3610-374-2576	PIN, STRAIGHT, HEADLESS: conveyor guide holdup latch, 1/8 in. dia, 5/8 in. lg, electrofilmed finish 192E (932300)	EA	1						
X2 0 00232		LEVER ASSEMBLY: feed jogger, electrofilmed finish 770DC317E (93230)	EA	1					10	14
X2 0 00233		NUT, PLAIN, HEXAGON: conveyor guide holdup latch stud, No. 10-32 thd size, electrofilmed finish 100E (93230)	EA	1					10	2
X2 0 00234		STUD: conveyor guide holdup latch, electrofilmed finish 3010E (3230)	EA	1					10	4
P 0 00235		WHEEL ASSEMBLY SPEED: gear side, front 550DP152 (93230)	EA	1	*	*	*	2	10	7
X2 0 00236		ARM: tension roll, electrofilmed finish 5345E (93230)	EA	2					8	9
X2 0 00237		BEARING, BALL, ANNULAR: arm 72AH122 (93230) (Used with WHEEL ASSEMBLY, Stock No. 3610-374-2576, only)	EA	1					8	6
X2 0 00238		HEAD, SPEEDWHEEL: gear side, electrofilmed finish 211DC109E (93230)	EA	2					8	10
X2 0 00239		PIN, ROLL: speedwheel head 331DC2153 (93230) (Used with WHEEL ASSEMBLY, Stock No. 3610-427-5960, only)	EA	1					8	7
X2 0 00240		PIN, STRAIGHT, HEADLESS: spring head, 1/16 in. dia, 7/16 in. lg, electrofilmed finish 1276E (93230)	EA	2	SEE	GRP	9901		8	2
X2 0 00241		PIN, STRAIGHT, HEADLESS: tension roll arm, 1/8 in. dia, 5/8 in. lg, electrofilmed finish 1298E (93230) (Used with WHEEL ASSEMBLY, Stock No. 3610-374-2576, only)	EA	1					8	7
X2 0 00242		ROLL: tension, rear 47DC59 (93230) (Used with WHEEL ASSEMBLY, Stock No. 3610-427-5960, only)	EA	1						
X2 0 00243		SCREW, KNURLED HEAD: head tension, No. 10-32 thd size, 103/8 in. lg, electrofilmed finish 2143E (93230)	EA	2	SEE	GRP	9901		8	1
X2 0 00244		SPRING, HELICAL, COMPRESSION: tension roll arm, lh, electrofilmed finish 2948E (93230)	EA	2					8	4
X2 0 00245		STUD, PLAIN: roll arm 30DP16 (93230) (Used with WHEEL ASSEMBLY, Stock No. 3610-374-2576, only)	EA	1					8	5
X2 0 00246		STUD, SHOULDERED: roll, No. 10-32 thd size, 0.365 in. lg, electrofilmed finish 3014E (93230) (Used with WHEEL ASSEMBLY, stock No. 3610-427-5960, only)	EA	1					8	5
X2 0 00247		STUD: tension roll arm, electrofilmed finish 3124E (3230)	EA	2	SEE	GRP	9901		8	3
X2 0 00247		STUD: tension roll arm, electrofilmed finish 3124E (93230)	EA	2	SEE	GRP	9901		8	8
X2 0 00248		WHEEL ADJUSTING: tension roll spring, electrofilmed finish 46140E (93230)	EA	2	SEE	GRP	9901		8	3
P 0 00249	3610-427-5960 WHEEL ASSEMBLY, SPEED: gear side, rear, electrofilmed finish 711DC122E (93230) (Same as WHEEL ASSEMBLY, Stock No. 3610-374-2576, except where individual components are annotated)	EA	1	*	*	*	2	10	8	

(1) SMR CODE	(2) FEDERAL STOCK NUMBER	(3) DESCRIPTION REF NUMBER & MFR USABLE ON CODE	(4) UNIT OF MEAS	(5) QTY INC IN UNIT	(6) 15-DAY ORGANIZATIONAL MAINTENANCE ALW				(7) ILLUS- TRATION	
					(a) 1-5	(b) 6-20	(c) 21-50	(d) 51-100	(a) FIG. NO.	(b) ITE M NO.
P 0 00250	3610-374-2575	WHEEL ASSEMBLY, SPEED: operator's side, front 550DP151 (93230) (Same as WHEEL ASSEMBLY, Stock No. 3610-496-3444, except where individual components are annotated)	EA	1	*	*	*	2	10	8
P 0 00251	3610-496-3444	WHEEL ASSEMBLY, SPEED: operator's side, rear, electrofilmed finish 771DC12E (93230)	EA	1	*	*	*	2	10	7
X2 0 00252		ARM, tension roll, electrofilmed finish 5344E (93230)	EA	2					7	9
X2 0 00253		BEARING, BALL, ANNULAR: arm 72AH122 (93230) (Used with WHEEL ASSEMBLY, Stock No. 3610-374-2575 only)	EA	1					7	6
X2 0 00254		HEAD, SPEEDWHEEL: electrofilmed finish 211DC110E (93230)	EA	2					7	10
X2 0 00255		PIN, ROLL: speedwheel 331DP2153 (93230)	EA	2					7	7
X2 0 00256		PIN, STRAIGHT, HEADLESS: arm stud, 1/16 in. dia, 7/16 in. lg, electrofilmed finish 1276E (93230)	EA	2	SEE	GRP	9901		7	2
X2 0 00257		PIN, STRAIGHT, HEADLESS: tension roll arm, 1/8 in. dia, 5/8 in. lg, electrofilmed finish 1298E (93230) (Used with SPEEDWHEEL ASSEMBLY, Stock No. 3610-374- 2575, only)	EA	1					7	7
X2 0 00258		ROLL: tension, rear 47DC59 (93230) (Used on WHEEL ASSEMBLY, Stock No. 3610-496-3444, only)	EA	1						
X2 0 00259		SCREW, KNURLED HEAD: tension arm, No. 10-32 thd size, 13/8 in. lg, electrofilmed finish 2143E (93230)	EA	2	SEE	GRP	9901		7	1
X2 0 00260		SPRING, HELICAL, EXTENSION: tension roll arm 2947 (93230)	EA	2					7	4
X2 0 00261		STUD, PLAIN: roll arm 30DP16 (93230)	EA	1					7	5
X2 0 00262		STUD: roll, electrofilmed finish 3014E (93230) (Used on WHEEL ASSEMBLY, Stock No. 3610-496-3444, only)	EA	1					7	5
X2 0 00263		STUD: tension roll arm, electrofilmed finish 3124E (93230)	EA	2	SEE	GRP	9901		7	8
X2 0 00264		WHEEL ADJUSTING: tension roll spring, electrofilmed finish 46140E (93230)	EA	2	SEE	GRP	9901		7	3
00265		6503 - OFFSET MAIN PRESS ASSEMBLY								
x2 0 00266		BRACKET: press lift 90DP1274 (93230)	EA	1					12	6
P 0 00267	3610-374-2594	BRUSH ASSEMBLY: cylinder 999DP810 (93230)	EA	1	*	*	2	2		
X2 0 00268		BAR ASSEMBLY: cylinder brush 563DP524 (93230)	EA	1						
X2 0 00269		BAR: brush back 63DP524 (93230)	EA	1						
X1 00270		STUD: cylinder brush bar 404DP1495 (93230)	EA	2						
X2 0 00271		BRUSH: CYLINDER, BACK 499DP810 (93230)	EA	1						

(1) SMR CODE	(2) FEDERAL STOCK NUMBER	(3) DESCRIPTION REF NUMBER & MFR USABLE ON CODE	(4) UNIT OF MEAS	(5) QTY INC IN UNIT	(6) 15-DAY ORGANIZATIONAL MAINTENANCE ALW				(7) ILLUS- TRATION	
					(a) 1-5	(b) 6-20	(c) 21-50	(d) 51-100	(a) FIG. NO.	(b) ITEM NO.
X2 0 00272		SCREW, WOOD, ROUND HEAD: cylinder brush, No. 8-15 thd size, 5/8 in. lg, electrofilmed finish 2664E (93230)	EA	4						
X2 0 00273		CAP ASSEMBLY: wheel retaining 610DP145 (93230)	EA	2					12	17
X2 0 00274		FITTING, LUBRICATION: bearing, 65 deg, 1/8-27 thd size 439DP55 (93230)	EA	1	SEE	GRP	9901			
X2 0 00275		FITTING, LUBRICATION: cylinder bearing 439DP56 (93230)	EA	1						
X2 0 00276		FITTING, LUBRICATION: cylinder bearing, 65 deg, 1/8-27 thd size 439DP55 (93230)	EA	2	SEE	GRP	9901			
X2 0 00277		FITTING, LUBRICATION: gripper shaft bearing 439DP53 (93230)	EA	3						
X2 0 00278		FITTING, LUBRICATION: impression cylinder bearing, 1/8-27 thd size 439DP56 (93230)	EA	1						
X2 0 00279		FITTING, LUBRICATION: plate cylinder, 65 deg, 1/8-27 thd size 439DP55 (3230)	EA	1	SEE	GRP	9901			
X2 0 00280		GUARD ASSEMBLY: belt 201DP140 (93230)	EA	1					13	18
X2 0 00281		KNOB: door 210AH136 (93230)	EA	1					13	1
X2 0 00282		SCREW, BUTTON HEAD, SOCKET DRIVE: door, 5/8-18 thd size, 3/4 in lg 21DP40 (93230)	EA	1					13	15
X2 0 00283		SPACER: doorknob 122DP262 (93230)	EA	1					13	17
X2 0 00284		GUARD ASSEMBLY: plate and blanket cylinder 701DP188 (93230)	EA	1					13	13
X2 0 00285		GUARD: lucite 201DP188 (93230)	EA	1					11	4
X2 0 00286		GUARD SUBASSEMBLY: plate and blanket 701DP141 (93230)	EA	1					11	7
X1 00287		BAR ASSEMBLY: plate and blanket 563DP525 (92330)	EA	1						
X1 00288		BAR, GUARD: plate and blanket 63P525 (93230)	EA	1						
X1 00289		STUD, BAR GUARD: plate and blanket 404DP1503 (93230)	EA	1						
X1 00290		GUARD: plate and blanket cylinder, front 201DP141 (93230)	EA	1						
X1 00291		GUARD: plate and blanket cylinder, rear 201DP142 (93230)	EA	1						
X1 00292		HINGE FLAP ASSEMBLY 999DP839 (93230)	EA	2						
X2 0 00293		HINGE: flap 499DP839 (93230)	EA	2					11	8
X1 00294		HINGE: flap 499DP840 (93230)	EA	2						
M 0 00295		PIN, STRAIGHT, HINGE, FLAP 13DP27 (93230) MANUFACTURE FROM:	EA	2						
P 0 00296		STEEL BAR, CARBON, COLD FINISHED (1-1/6 IN. required for each PIN)	FT		SEE	GRP	9501			

(1) SMR CODE	(2) FEDERAL STOCK NUMBER	(3) DESCRIPTION REF NUMBER & MFR USABLE ON CODE	(4) UNIT OF MEAS	(5) QTY INC IN UNIT	(6) 15-DAY ORGANIZATIONAL MAINTENANCE ALW				(7) ILLUS- TRATION	
					(a) 1-5	(b) 6-20	(c) 21-50	(d) 51-100	(a) FIG. NO.	(b) ITEM NO.
X1 00297		NUT, PLAIN, HEXAGON: guard bar, 1/4-28 thd size, electrofilmed finish 10F06E (93230)	EA	1						
X1 00298		SCREW, CAP, HEXAGON HEAD: guard bar 19F31 (93230)	EA	1						
X2 0 00299		NUT, HEXAGON: special, cover plated, No. 10-32 thd size 10DP119 (93230)	EA	4					11	1
X2 0 00300		NUT, PLAIN, HEXAGON: plate and blanket cylinder guard, 1/4-28 thd size, electrofilmed finish 10F06E (93230)	EA	1					11	6
X2 0 00301		PLATE: guard back 336DP819 (93230)	EA	2					11	3
X2 0 00302		SCREW, CAP, HEXAGON HEAD: plate and blanket cylinder guard 19F31 (93230)	EA	1					11	5
X2 0 00303		SCREW, CAP, SOCKET, BUTTON HEAD: cover plate, No. 10-32 thd size, 1/2 in. lg 21DP39 (92330)	EA	4					11	2
X2 0 00304		NUT, SELF-LOCKING, HEXAGON: bracket mtg 10DP129 (93230)	EA	4					12	4
X2 0 00305		SCREW, AP, HEXAGON HEAD: guard mtg, 3/8-16 thd size, 3/4 in. lg, cadmium plated, electrofilmed finish 1957B (93230)	EA	1					13	21
X2 0 00306		SCREW, CAP, SOCKET HEAD: belt guard poppet mtg 2085 (93230)	EA	4					13	19
X2 0 00307		SCREW, CAP, SOCKET HEAD: belt guard to post, 5/16-18 thd size, 1 in. lg, electrofilmed finish 2082E (93230)	EA	1					13	16
X2 0 00308		SCREW, CAP, SOCKET HEAD: press lift bracket mtg, 1/2-13 thd size, 2 in. lg 2093 (93230)	EA	4					12	5
X2 0 00309		SCREW, CAP, SOCKET HEAD: press wheel retaining, cap mtg 2086 (93230)	EA	2					12	16
X2 0 00310		THUMBSCREW: plate and blanket cylinder guard mtg, 5/16-18 thd size, 3/4 in. lg, cadmium 2579B (93230)	EA	1					13	12
M 0 00311		TUBE, OIL: delivery jogger motion shaft bearing 436DP209 (93230) MANUFACTURE FROM:	EA	1						
P 0 00312	4710-277-5524	TUBE, COPPER (12 in. required)	FT		SEE	GRP	9501			
P 0 00313		TUBE, OIL: delivery worm shaft bearing 436DP219 (93230) MANUFACTURE FROM:	EA	1						
P 0 00314	4710-277-5524	TUBE, COPPER (11 in. required)	FT		SEE	GRP	9501			
X2 0 00315		WASHER, FLAT: belt guard poppet mtg, 25/64 in. id, 5/8 in. od, 3/16 in. thk, electrofilmed finish 4637E (93230)	EA	4					13	20
X2 0 00316		WHEEL ASSEMBLY: press 961DP51 (93230)	EA	2					12	18
X2 0 00317		FITTING, LUBRICATION: press wheel 439DP53 (93230)	EA	2						
00318		6504 - OFFSET PRESS INKER								
X2 0 00319		FITTING, LUBRICATION: ink fountain assembly 439DP51 (93230)	EA	2						

(1) SMR CODE	(2) FEDERAL STOCK NUMBER	(3) DESCRIPTION USABLE ON CODE	(4) UNIT OF MEAS	(5) QTY INC IN UNIT	(6) 15-DAY ORGANIZATIONAL MAINTENANCE ALW				(7) ILLUS- TRATION	
					(a) 1-5	(b) 6-20	(c) 21-50	(d) 51-100	(a) FIG. NO.	(b) ITEM NO.
X2 0 00320		FITTING, LUBRICATION: small ink vibrator roller and intermediate gear stud 439DP52 (93230)	EA	2						
X2 0 00321		GUARD: ink gear 201DP193 (93230)	EA	1					13	2
X2 0 00322		POPPET: ink gear guard, 499DP827 (93230)	EA	4					13	5
P 0 00323	3610-885-8422	ROLLER ASSEMBLY: auxiliary vibrator 388DP967 (93230)	EA	1	*	*	*	2	13	11
X2 0 00324		FITTING LUBRICATION: roller shaft, 1/4-28 thd size 439DP86 (93230)	EA	2	SEE	GRP	9901			
P 0 00325	3610-608-1687	ROLLER ASSEMBLY: ink ductor and distributor 876DP86 (93230)	EA	3	*	2	2	4	13	7
X1 00326		SHAFT: roller, ink ductor and distributor 390DP125 (93230)	EA	3					8	6
P 0 00327	3610-628-0531	ROLLER: form inking 876DP87 (93230)	EA	5	*	2	3	5	13	10
X1 00328		SHAFT: roller, form inking 390DP126 (93230)	EA	5					8	7
P 0 00329	3610-885-5688	ROLLER: ink rider 390DP127 (93230)	EA	1	*	*	*	2	13	6
P 0 00330	3610-885-5690	ROLLER: ink vibration 890DP134 (93230)	EA	2	*	*	2	2		
X2 0 00331		SCREW, MACHINE: ink gear guard poppet mtg, 1/4-28 thd size, 5/8 in. lg, electrofilmed finish 17F76E (93230)	EA	4					13	3
X2 0 00332		WASHER, FLAT: ink gear guard poppet mtg, 17-64 in. id, 7/16 in. od, 1/16 in. thk, electrofilmed finish 4545E (93230)	EA	4					13	4
00333		6505 - OFFSET PRESS WATER SYSTEM								
X2 0 00334		FITTING, LUBRICATION: water motion intermediate gear stud 439DP52 (93230)	EA	1						
X2 0 00335		HANDLE: water trip throwoff lever, electrofilmed finish 210DC38E (93230)	EA	1						
X2 0 00336		ROLLER ASSEMBLY: duct dampener 875DP16 (93230)	EA	1					13	9
P 0 00337	3610-885-8423	ROLLER: ductor dampener (rubber core) 876DP66 (93230)	EA	1	*	*	2	2		
X1 00338		SHAFT ROLLER: ductor dampener 380DP905	EA	1						
X2 0 00339		ROLLER ASSEMBLY, FORM DAMPENER 875DP15 (93230)	EA	2					13	8
P 0 00340	3610-885-8424	ROLLER: form dampener (rubber core) 876DP65 (93230)	EA	2	*	2	2	2		
X1 00341		SHAFT, ROLLER: form dampener 308DP904 (93230)	EA	2						
00342		6506 - PILE DELIVERY								
X2 0 00343		FITTING, LUBRICATION: delivery shaft sprocket bearing 439DP51	EA	2						

(1) SMR CODE	(2) FEDERAL STOCK NUMBER	(3) DESCRIPTION USABLE ON CODE	(4) UNIT OF MEAS	(5) QTY INC IN UNIT	(6) 15-DAY ORGANIZATIONAL MAINTENANCE ALW				(7) ILLUS- TRATION	
					(a) 1-5	(b) 6-20	(c) 21-50	(d) 51-100	(a) FIG. NO.	(b) ITEM NO.
00344		GROUP 76 - FIRE FIGHTING EQUIPMENT COMPONENTS								
00345		7638 - PORTABLE FIRE FIGHTING EQUIPMENT (Includes Fire Extinguishers)								
P OR 00346	4210-555-8837	EXTINGUISHER, FIRE: monobromotrifluoromethane	EA	1	*	*	*	*		
P O 00347	4210-708-0031	CYLINDER: charged	NX	1	*	*	*	*		
P O 00348	4210-779-3516	SEAL: self-locking	EA	1	*	*	*	*		
00349		GROUP 95 - GENERAL USE STANDARDIZED PARTS								
00350		9501 - HARDWARE SUPPLIES AND BULK MATERIAL, COMMON								
P O 00351	4720-283-8300	HOSE, RUBBER: 3/8 in. id	FT		*	*	*	*		
P O 00352	4720-278-4889	HOSE, RUBBER: 1/2 in. id	FT		*	*	*	*		
P O 00353	4720-278-4915	HOSE, RUBBER: 1 in. id	FT		*	*	*	*		
P O 00354	9510-596-2015	STEEL BAR, CARBON, COLD FINISHED: 1/8 in. dia	FT		*	*	*	*		
P O 00355	4710-277-5524	TUBE, COPPER: 3/16 in. dia	FT		*	*	*	*		
00356		GROUP 99 - PART PECULIAR								
00357		9901 - MULTI-LISTED PARTS								
X2 O 00358		BUSHING, PIPE: male end, 1-11 1/2 thd size, female end, 3/4-14 thd size, electrofilmed finish 618E (93230)	EA	2						
X2 O 00359		FITTING, LUBRICATION: 65 deg, 1/8-27 thd size 439DP55 (93230)	EA	4						
X2 O 00360		NIPPLE, HOSE: one end thd male, 3/8-18 thd size, 2 in. lg, electrofilmed finish 719E (93230)	EA	2						
X2 O 00361		NIPPLE, TUBE: electrofilmed finish 732E (93230)	EA	2						
X2 O 00362		PIN, STRAIGHT, HEADLESS: 1/16 in. dia, 7/16 in. lg, electrofilmed finish 1276E (93230)	EA	4						
X2 O 00363		RING, RETAINING: electrofilmed finish 119AG5 (93230)	EA	8						
X2 O 00364		SCREW, DRIVE: No. 2-3/16 in. lg, electrofilmed finish 2372E (93230)	EA	4						
X2 O 00365		SCREW, DRIVE: No. 6-5/16 in. lg, electrofilmed finish 2370E (93230)	EA	10						
X2 O 00366		SCREW, KNURLED HEAD: No. 10-32 thd size, 1-3/8 in. lg electrofilmed finish 2143E (93230)	EA	4						
X2 O 00367		SETSCREW, SQUARE HEAD: 1/4-20 thd size, 5/8 in. lg, cadmium plated, electrofilmed finish 2364E (93230)	EA	8						
P O 00368	6110-779-0665	STARTER 633VKB41F (89025)	EA	2	*	*	2	2		
X2 O 00369		STUD: electrofilmed finish 3124E (93230)	EA	4						
X2 O 00370		WASHER, FLAT: 0/765 in. id, 1.312 in. od, 0.32 in. thk, electrofilmed finish 4502E (93230)	EA	2						
X2 O 00371		WHEEL, ADJUSTING: electrofilmed finish 46140E (93230)	EA	4						

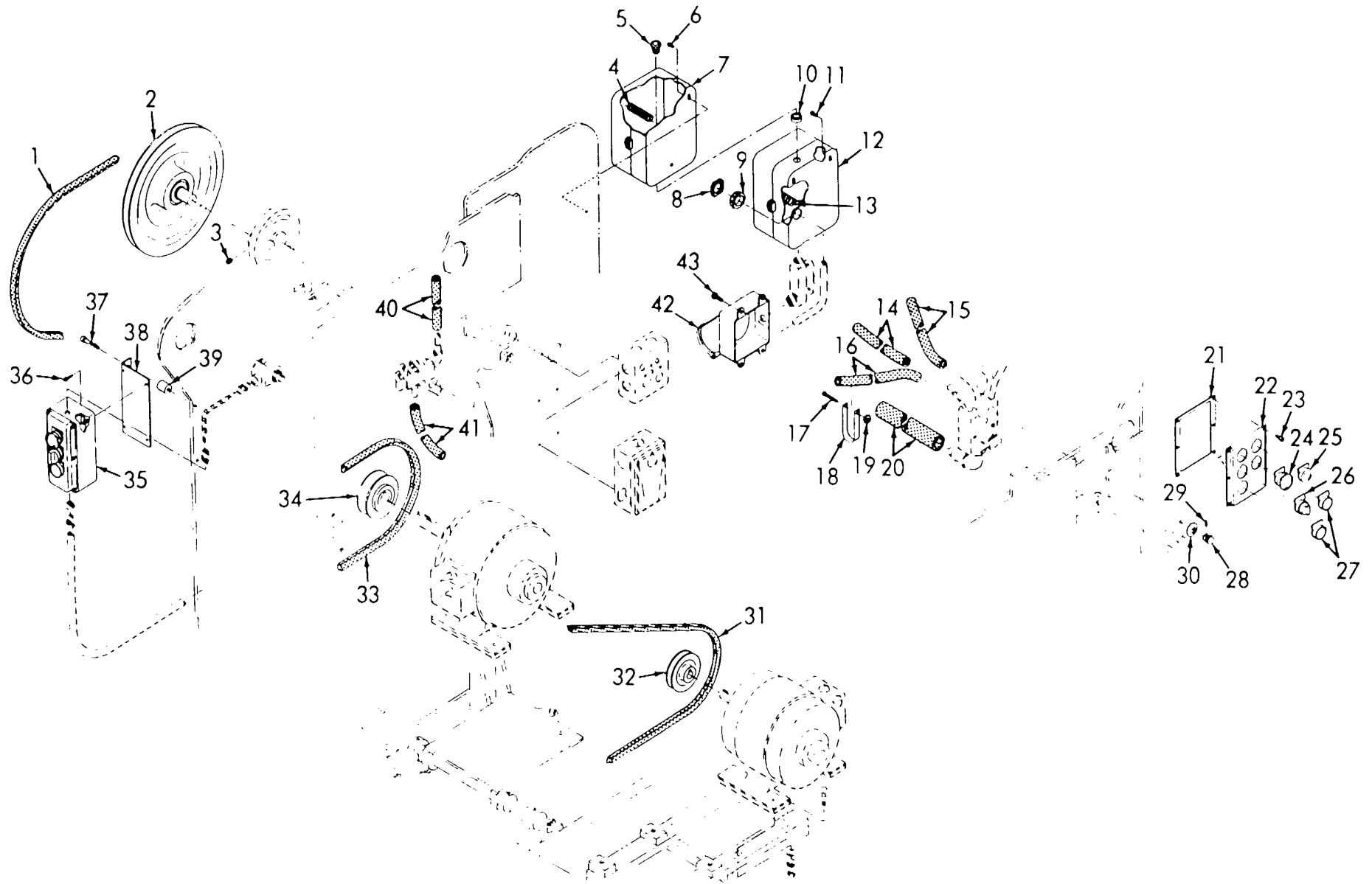
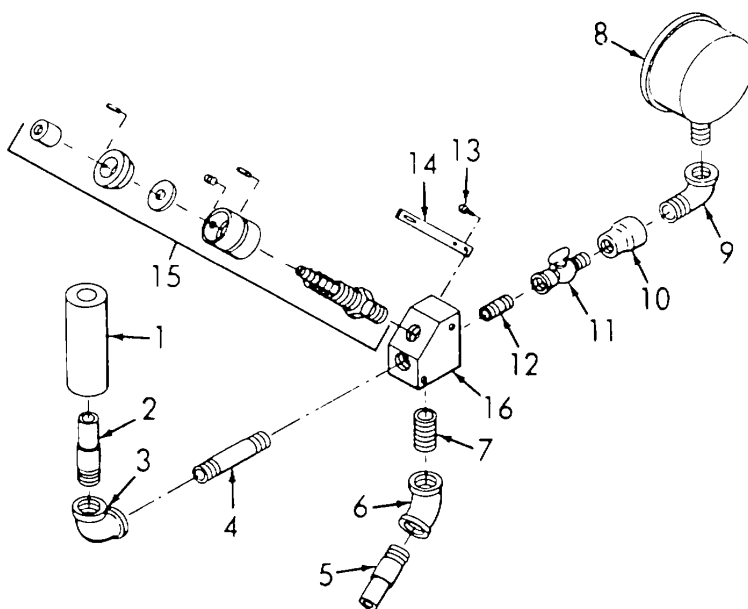


Figure 1. Blower and Drive Motor Belts, Pulleys and Switches.

INDEX TO PARTS, FIGURE 1

Reference Number	Functional Group	Item Name	Reference Number	Functional Group	Item Name
1	4007	BELT	23	4010	SCRE W
2	4007	PULLEY AY	24	4010	BUTTON
3	4007	SETSCREW	25	4010	PUSHBUTTON
4	4010	COIL	26	4010	SWITCH
5	4216	NIPPLE	27	4010	SWITCH
6	4010	SCREW	28	4320	KNOB
7	4010	STARTER	29	4320	SETSCREW
8	4216	LOCKNUT	30	4320	WASHER
9	4216	BUSHING	31	4319	BELT
10	4216	BUSHING	32	4007	PULLEY
11	4010	SCREW	33	4007	BELT
12	4010	STARTER	34	4007	PULLEY
13	4010	SWITCH	35	4010	SWITCH AY
14	4316	HOSE	36	4010	SCREW
15	4316	HOSE	37	4010	SCREW
16	4316	HOSE	38	4010	PLATE
17	4316	SCREW	39	4010	SPACER
18	4316	CLAMP	40	4316	HOSE
19	4316	NUT	41	4316	HOSE
20	4316	HOSE	42	4216	RECEPTACLE AY
21	4010	GASKET	43	4216	SCREW
22	4010	PLATE			

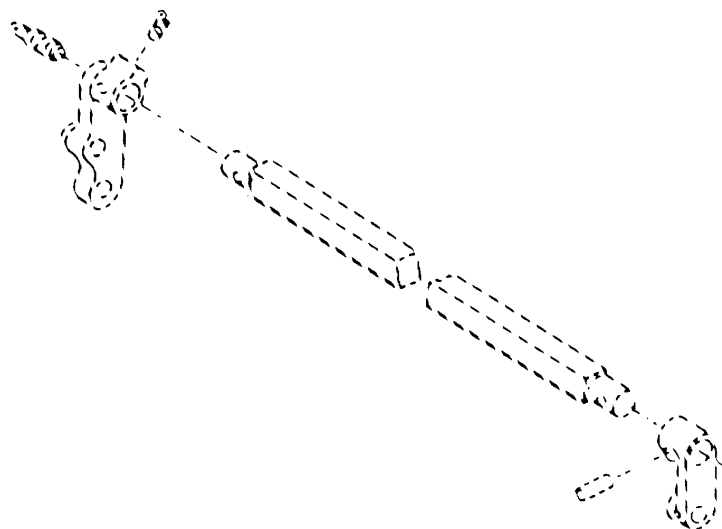


ME 3610-202-20P/2

Figure 2. Suction Valve Block.

INDEX TO PARTS, FIGURE 2

Reference Number	Functional Group	Item Name
1	4007	BELT
1	4316	HOSE
2	4316	NIPPLE
3	4316	ELBOW
4	4316	NIPPLE
5	4316	NIPPLE
6	4316	ELBOW
7	4316	NIPPLE
8	4702	GAGE
9	4702	ELBOW
10	4702	COUPLING
11	4702	COCK
12	4702	NIPPLE
13	4317	SCREW
14	4317	SPRING
15	4317	VALVE AY
16	4317	BLOCK

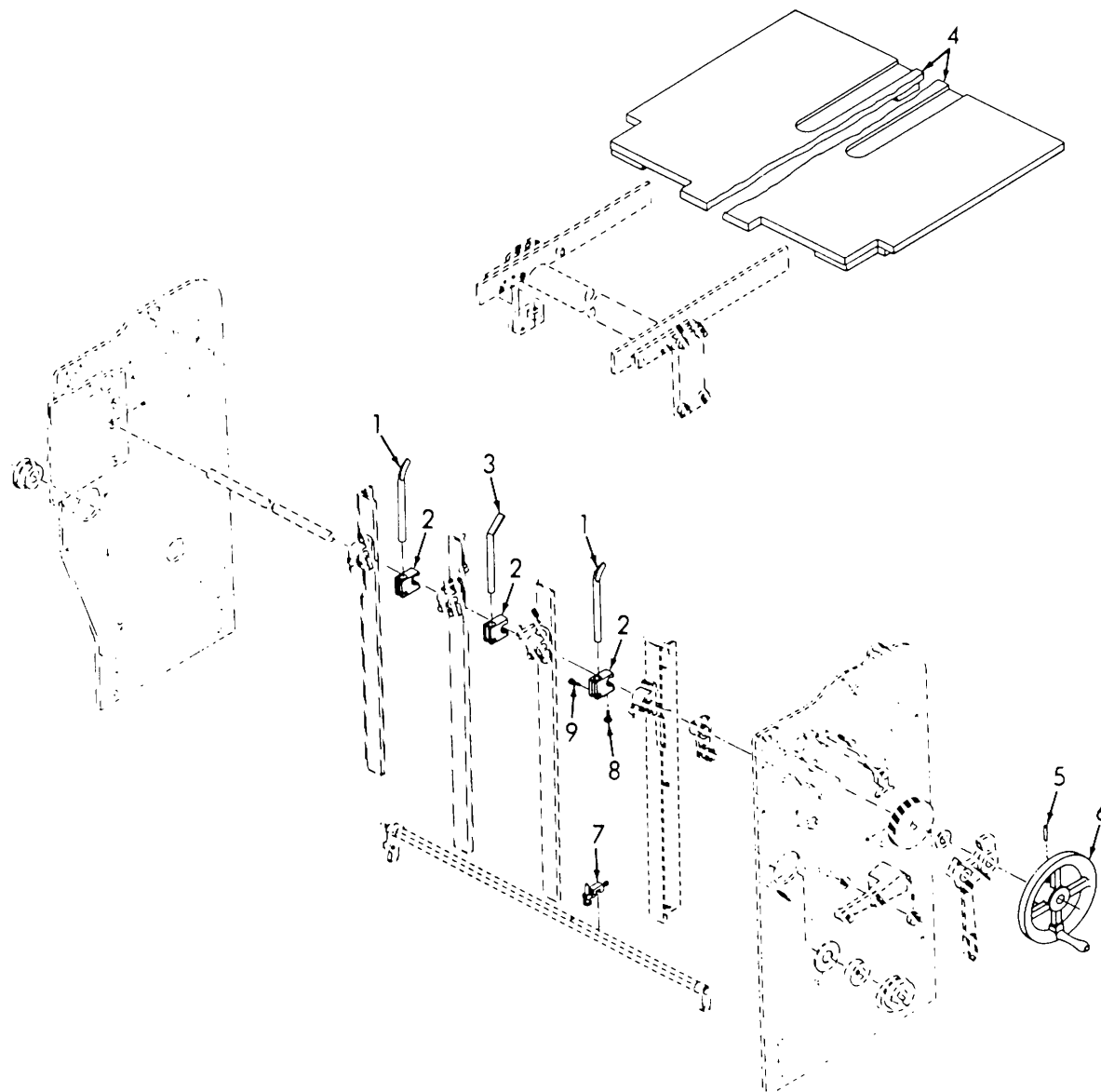


ME 3610-202-20P/3

Figure 3. Sucker.

INDEX TO PARTS, FIGURE 3

Reference Number	Functional Group	Item Name
1	4316	SCREW
2	4316	SUCKER
3	4316	SCREW
4	4316	BLOCK

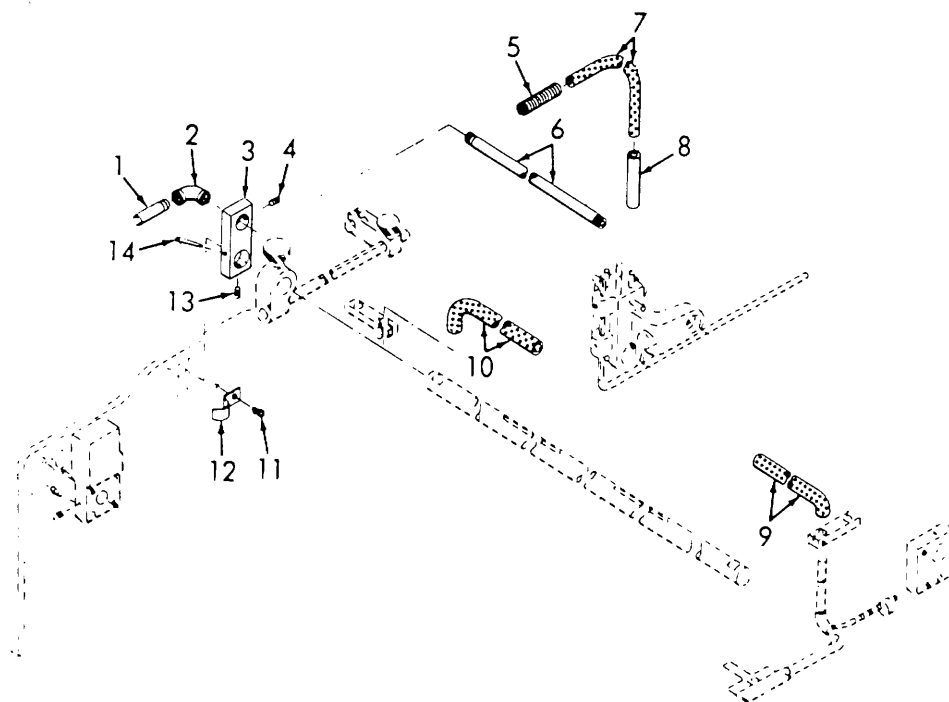


ME 3610-202-20P/4

Figure 4. Feeder Section.

INDEX TO PARTS, FIGURE 4

Reference Number	Functional Group	Item Name	Reference Number	Functional Group	Item Name
1	4316	NOZZLE	6	6501	HANDWHEEL AY
2	4316	BRACKET	7	4316	SUCKER AY
3	4316	NOZZLE	8	4316	SETSCREW
4	6501	BOARD AY	9	4316	SCREW
5	6501	PIN			

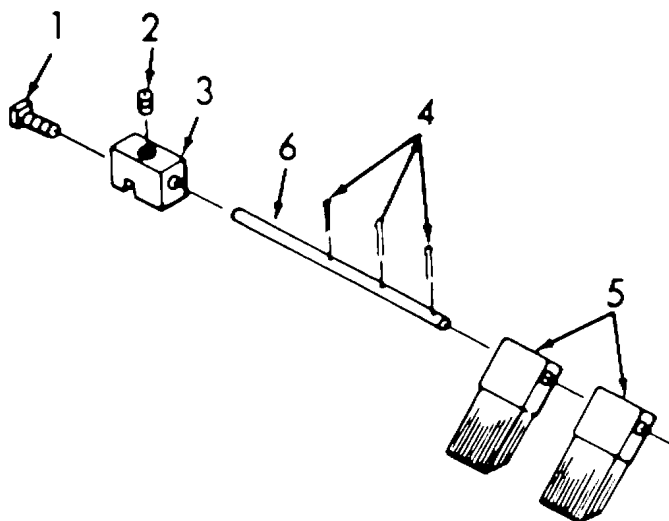


ME 3610-202-20P/5

Figure 5. Pile Control Section.

INDEX TO PARTS, FIGURE 5

Reference Number	Functional Group	Item Name
1	4316	NIPPLE
2	4316	ELBOW
3	4316	BLOCK
4	4316	SETSCREW
5	4316	SPRING
6	4316	PIPE
7	4316	HOSE
8	4316	SLEEVE
9	4316	HOSE
10	4316	HOSE
11	4316	SCREW
12	4316	CLIP
13	4316	SETSCREW
14	4316	PIN

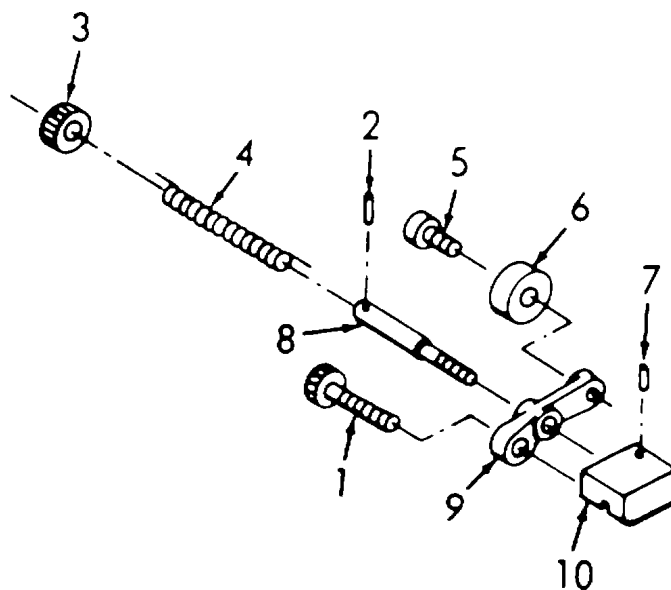


ME 3610-202-35P/29

Figure 6. Right and Left Hand Brush.

INDEX TO PARTS, FIGURE 6

Reference Number	Functional Group	Item Name
1	6502	SETSCREW
2	6502	SETSCREW
3	6502	BRACKET
4	6502	PIN
5	6502	BRUSH
6	6502	STUD

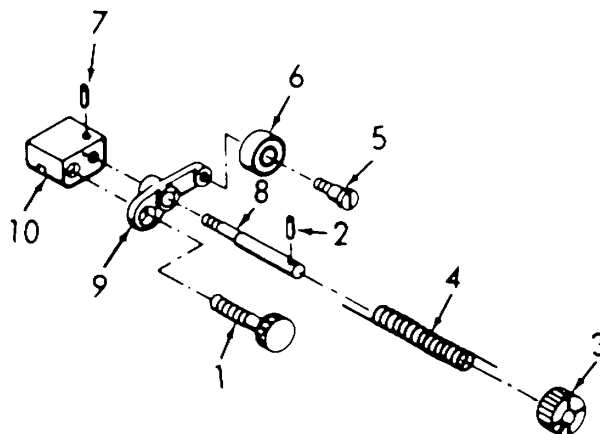


ME 3610-202-35P/28

Figure 7. Speedwheel; Operators Side, Front and Rear.

INDEX TO PARTS, FIGURE 7

Reference Number	Functional Group	Item Name
1	6502	SCREW
2	6502	PIN
3	6502	WHEEL
4	6502	SPRING
5	6502	STUD
6	6502	BEARING
7	6502	PIN
8	6502	STUD
9	6502	ARM
10	6502	HEAD

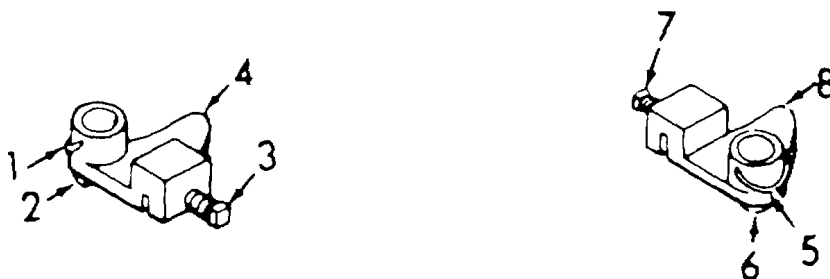


ME 3610-202-35P/27

Figure 8. Speedwheel; Gear Side, Front and Rear.

INDEX TO PARTS, FIGURE 8

Reference Number	Functional Group	Item Name
1	6502	SCREW
2	6502	PIN
3	6502	WHEEL
4	6502	SPRING
5	6502	STUD
6	6502	BEARING
7	6502	PIN
8	6502	STUD
9	6502	ARM
10	6502	HEAD



ME 3610-202-35P/26

Figure 9. Right and Left Hand Ball Holder.

INDEX TO PARTS, FIGURE 9

Reference Number	Functional Group	Item Name
1	6502	RING
2	6502	BALL
3	6502	SETSCREW
4	6502	HOLDER
5	6502	RING
6	6502	BALL
7	6502	SETSCREW
8	6502	HOLDER

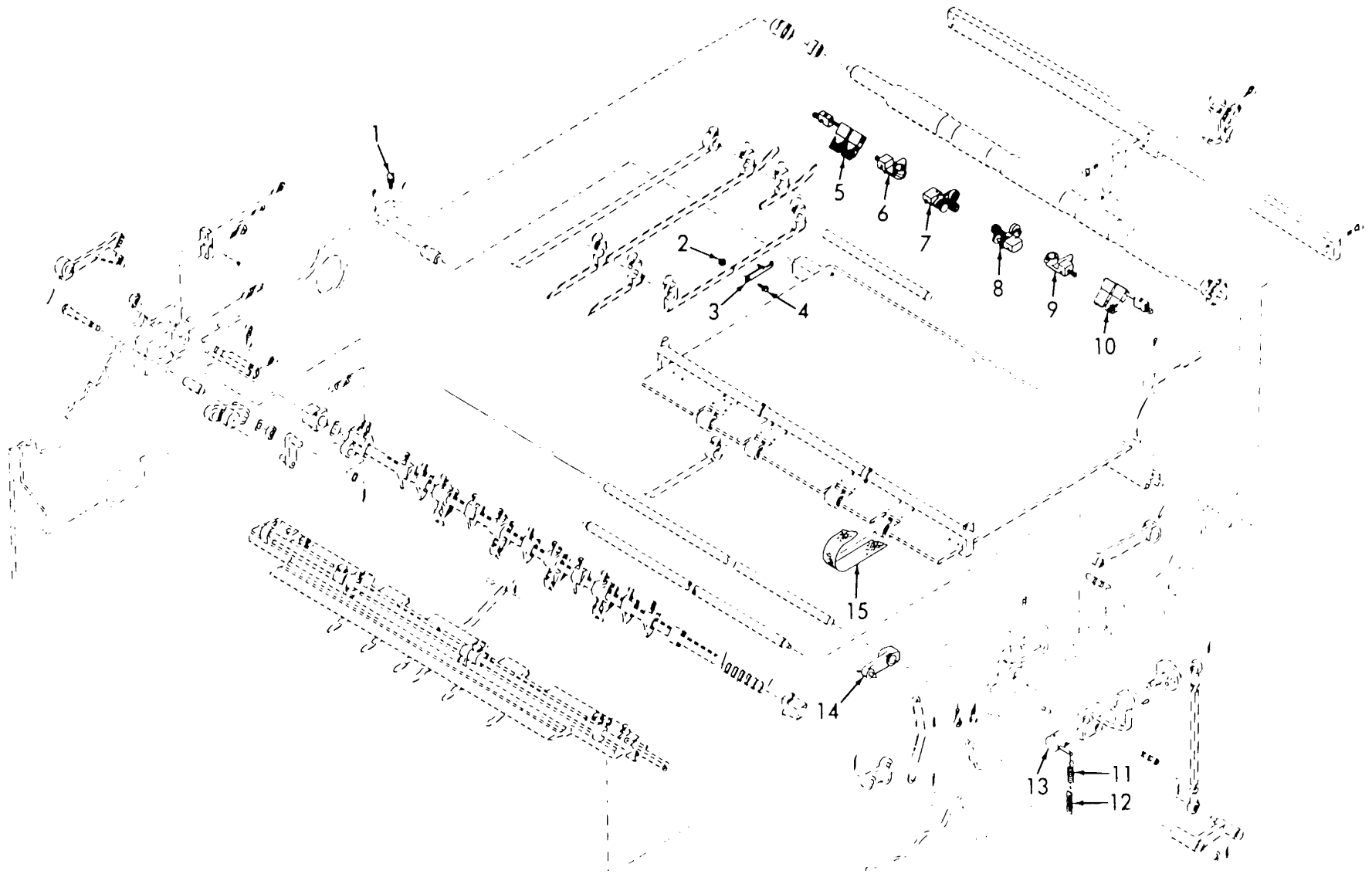


Figure 10. Feeder and Conveyor Sections.

ME 3610-202-20P/10

INDEX TO PARTS, FIGURE 10

Reference Number	Functional Group	Item Name	Reference Number	Functional Group	Item Name
1	6502	FITTING	9	6502	HOLDER AY
2	6502	NUT	10	6502	BRUSH AY
3	6502	LATCH AY	11	4701	SPRING
4	6502	STUD	12	4701	LINK
5	6502	BRUSH AY	13	4701	KNOB AY
6	6502	HOLDER AY	14	6502	LEVER AY
7	6502	WHEEL AY	15	6502	BELT
8	6502	WHEEL AY			

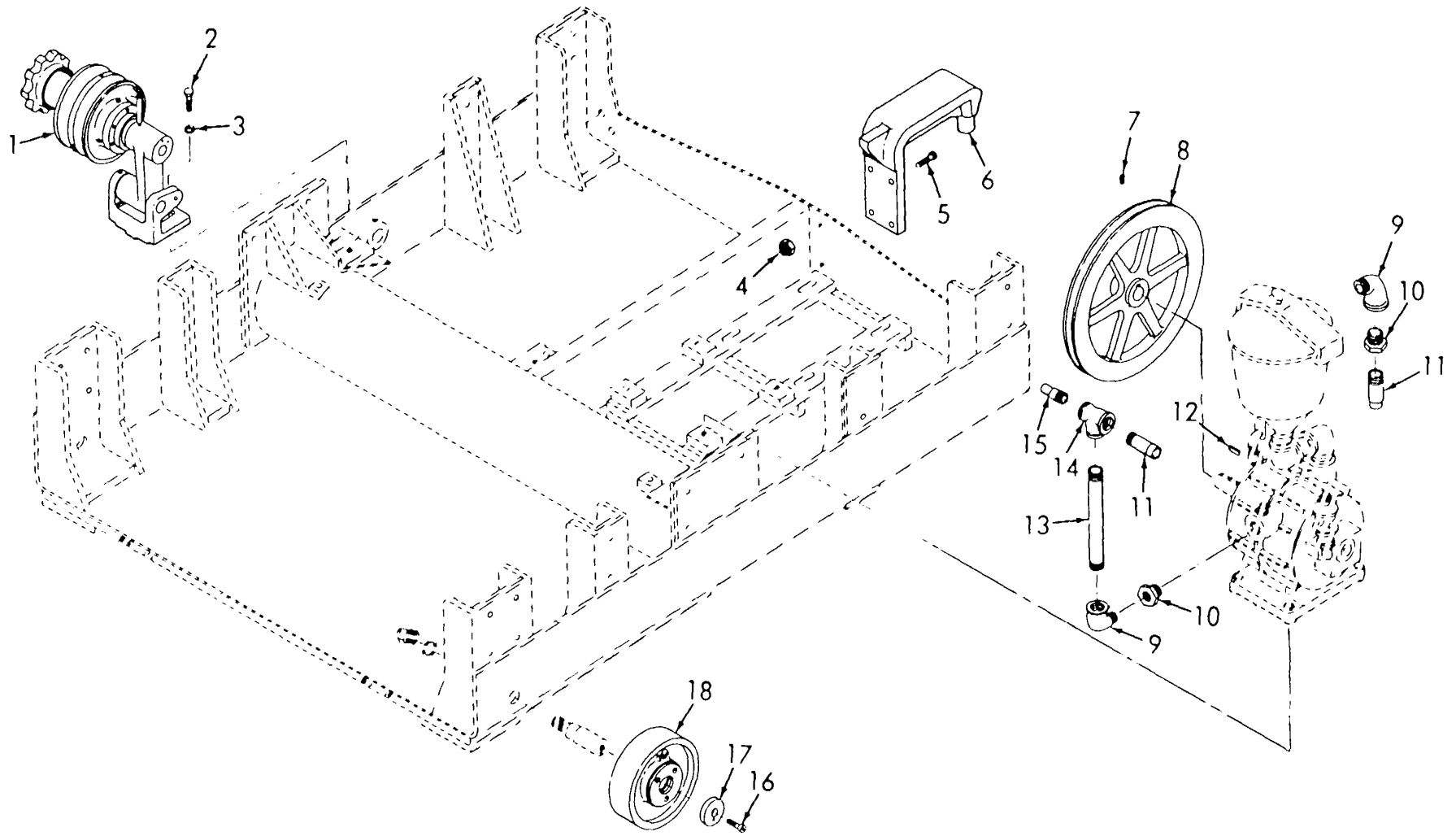
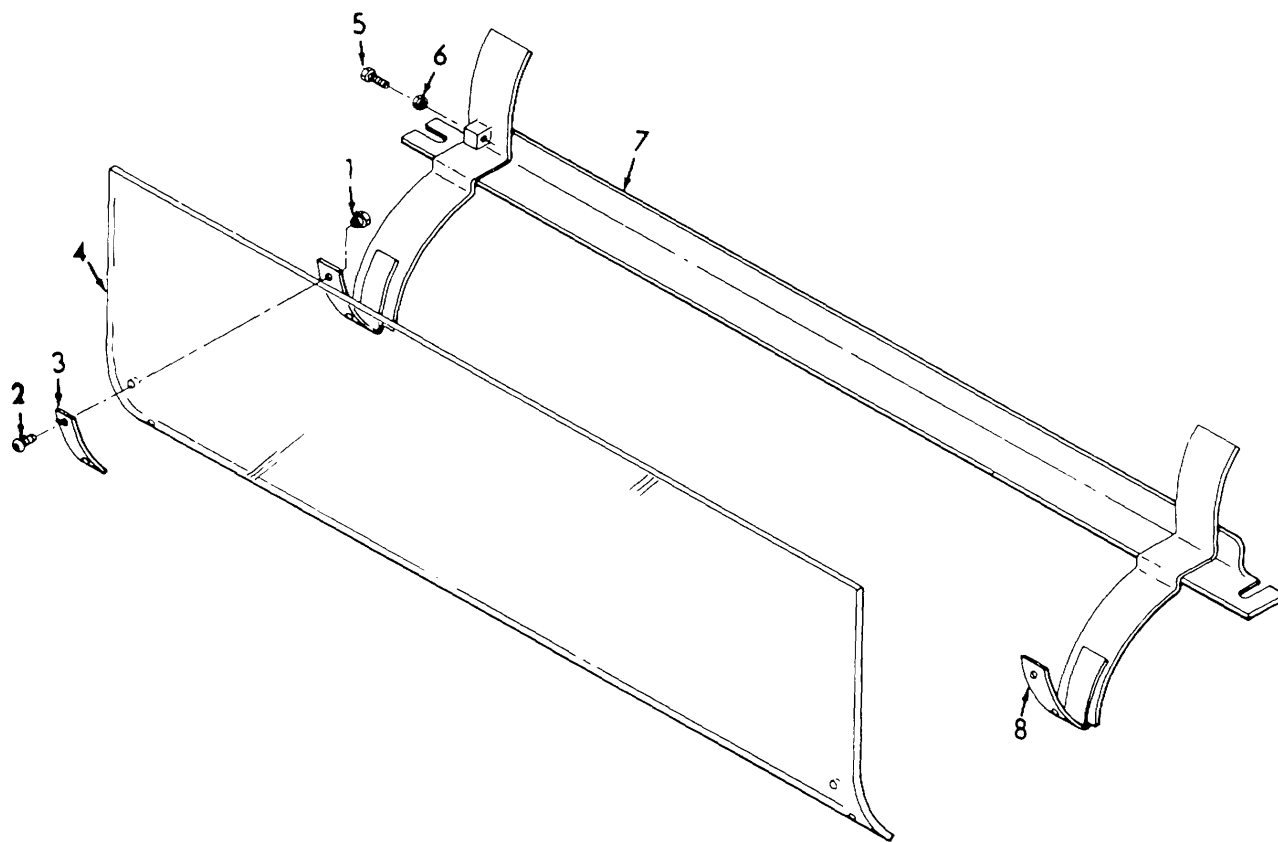


Figure 12. Base.

ME 3610-202-20P/12

INDEX TO PARTS, FIGURE 12

Reference Number	Functional Group	Item Name	Reference Number	Functional Group	Item Name
1	4007	PULLEY AY	10	4316	BUSHING
2	4007	SCREW	11	4316	NIPPLE
3	4007	WASHER	12	4319	KEY
4	6503	NUT	13	4316	NIPPLE
5	6503	SCREW	14	4316	TEE
6	6503	BRACKET	15	4316	NIPPLE
7	4319	SETSCREW	16	6503	SCREW
8	4319	PULLEY	17	6503	CAP AY
9	4316	ELBOW	18	6503	WHEEL AY



ME 3610-202-35P/47

Figure 11. Plate and Blanket Cylinder Guard.

INDEX TO PARTS, FIGURE 11

Reference Number	Functional Group	Item Name
1	6503	NUT
2	6503	SCREW
3	6503	PLATE
4	6503	GUARD
5	6503	SCREW
6	6503	NUT
7	6503	GUARD-SUBASSEMBLY
8	6503	HINGE

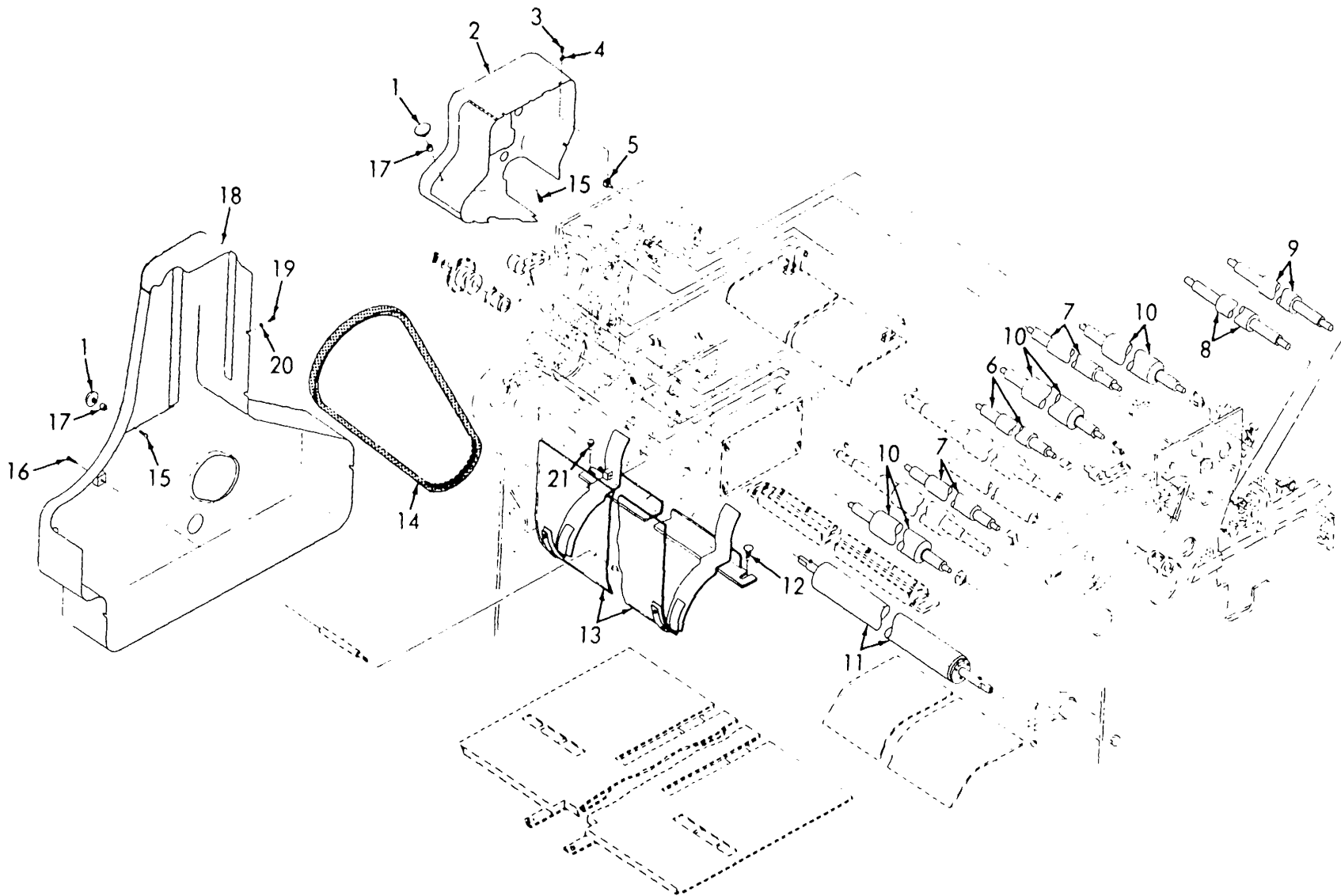


Figure 13. Guards and Rollers.

ME 3610-202-20P/13

INDEX TO PARTS, FIGURE 13

Reference Number	Functional Group	Item Name	Reference Number	Functional Group	Item Name
1	6503	KNOB	12	6503	THUMBSCREW
2	6504	GUARD	13	6503	GUARD AY
3	6504	SCREW	14	4007	BELT
4	6504	WASHER	15	6503	SCREW
5	6504	POPPET	16	6503	SCREW
6	6504	ROLLER	17	6503	SPACER
7	6504	ROLLER AY	18	6503	GUARD AY
8	6505	ROLLER AY	19	6503	SCREW
9	6505	ROLLER AY	20	6503	WASHER
10	6504	ROLLER	21	6503	SCREW
11	6504	ROLLER AY			

**SECTION V. INDEX-FEDERAL STOCK NUMBER AND REFERENCE NUMBER
CROSS-REFERENCE TO INDEX NUMBER**

<u>STOCK NUMBER</u>	<u>INDEX NUMBER</u>	<u>STOCK NUMBER</u>	<u>INDEX NUMBER</u>
2590-972-7900	00019	3610-885-5665	00025
3030-267-6831	00205	3610-885-5666	00023
3030-528-4625	00168	3610-885-5688	00329
3030-529-0394	00044	3610-885-5690	00330
3030-585-5756	00045	3610-885-8422	00323
3030-608-1682	00046	3610-885-8423	00337
3110-100-6160	00218	3610-885-8424	00340
3110-100-6160	00224	3610-937-3820	00017
3610-075-1751	00165	3610-974-9543	00004
3610-200-1700	00021	3610-976-3042	00005
3610-200-1700	00022	4210-555-8837	00346
3610-253-2907	00185	4210-708-0031	00347
3610-338-3239	00147	4210-779-3516	00348
3610-346-2987	00016	4710-277-5524	00312
3610-353-4486	00147	4710-277-5524	00314
3610-353-4536	00010	4710-277-5524	00355
3610-374-2575	00250	4720-238-8300	00115
3610-374-2576	00235	4720-278-4889	00101
3610-374-2592	00143	4720-278-4889	00105
3610-374-2594	00267	4720-278-4889	00107
3610-374-2595	00206	4720-278-4889	00109
3610-374-2596	00207	4720-278-4889	00111
3610-427-5566	00116	4720-278-4889	00113
3610-427-5807	00024	4720-278-4889	00118
3610-427-5960	00249	4720-278-4889	00352
3610-496-3444	00251	4720-278-4915	00103
3610-542-2508	00020	4720-278-4915	00120
3610-608-1687	00325	4720-278-4915	00353
3610-628-0531	00327	4720-283-8300	00351
3610-779-0642	00049	5930-843-0830	00077
3610-820-2798	00075	6110-779-0665	00073
3610-822-1483	00076	6110-779-0665	00074
3610-874-0569	00223	6110-779-0665	00368
3610-874-0570	00217	6685-248-6887	00157
3610-874-0571	00215	6685-248-6887	00190
3610-874-0572	00216	9510-596-2015	00296
3610-885-5663	00062	9510-596-2015	00354
3610-885-5664	00178		

<u>REFERENCE NO.</u>	<u>MFG CODE</u>	<u>INDEX NO.</u>	<u>REFERENCE NO.</u>	<u>MFG CODE</u>	<u>INDEX NO.</u>
MS39243-26	96906	00168	1298E	93230	00257
MS39257C	96906	00044	13DP27	93230	00295
RRP400	81348	00021	135DP126	93230	00015
RRP400	81348	00022	1523E	93230	00133
10DP119	93230	00299	1529E	93230	00202
10DP120	93230	00304	1613B	95879	00198
1 00DP123	93230	00132	17F74E	93230	00136
10F06E	93230	00297	17F76E	93230	00331
10F06E	93230	00300	1705E	93230	00163
1000E	93230	00233	1721E	93230	00071
1104	93230	00210	1741	93230	00070
118DP154	93230	00093	181DP530	93230	00007
119AG5	93230	00363	19F28B	93230	00145
119AG5E	93230	00221	19F30B	93230	00135
119AG5E	93230	00227	19F31	93230	00298
11920E	93230	00094	19F31	93230	00302
122DP262	93230	00283	1937E	93230	00086
1276E	93230	00240	1957B	93230	00305
1276E	93230	00256	1962B	93230	00054
1276E	93230	00362	20F57	93230	00166
1298E	93230	00231	20001	13591	00039
1298E	93230	00241	201DP140	93230	00280

**SECTION V. INDEX-FEDERAL STOCK NUMBER AND REFERENCE NUMBER
CROSS-REFERENCE TO INDEX NUMBER (Continued)**

<u>REFERENCE NO.</u>	<u>MFG CODE</u>	<u>INDEX NO.</u>	<u>REFERENCE NO.</u>	<u>MFG CODE</u>	<u>INDEX NO.</u>
201DP141	93230	00290	2372E	93230	00035
201DP142	93230	00291	2372E	93230	00036
201DP188	93230	00285	2372E	93230	00038
201DP193	93230	00321	2372E	93230	00364
2069	93230	00068	2579B	93230	00310
2069	93230	00069	260DP92	93230	00230
2082E	93230	00307	2611E	93230	00196
2085	93230	00055	265DP367	93230	00184
2085	93230	00306	2664E	93230	00272
2086	93230	00309	28DC65	93230	00185
2093	93230	00308	28DP225	93230	00142
21DP39	93230	00303	29AL103	93230	00164
21DP40	93230	00282	2947	93230	00260
21F62E	93230	00146	2948E	93230	00244
210AH136	93230	00281	3DP178	93230	00072
210DC338E	93230	00335	30DP16	93230	00245
210DP233	93230	00006	30DP16	93230	00261
210DP235	93230	00200	3010E	93230	00234
210DP237	93230	00173	3014E	93230	00246
210DP241	93230	00180	3014E	93230	00262
210DP241	93230	00180	308DP904	93230	00341
2100	93230	00067	3124E	93230	00247
21032E	93230	00017	3124E	93230	00263
211DC109E	93230	00238	3124E	93230	00369
211DC110E	93230	00254	331DC2153	93230	00239
2143E	93230	00243	331DP2153	93230	00255
2143E	93230	00259	33584	93230	00030
2143E	93230	00366	336DC566	93230	00027
22F66	93230	00211	336D3613	93230	00028
220DE97E	93230	00226	336DP2235	93230	00034
220DE98E	93230	00220	336DP235	93230	00033
223DC11	93230	00116	336DP792	93230	00031
223DC8	93230	00141	336DP819	93230	00301
223DP79	93230	00104	336DP820	93230	00065
223DP80	93230	00108	336DP821	93230	00064
223DP81	93230	00110	336DP835	93230	00032
223DP82	93230	00100	343DC81	93230	00052
223DP83	93230	00102	343DC82E	93230	00170
223DP83	93230	00119	343DP262	93230	00053
223DP84	93230	00106	370DP322	93230	00183
223DP85	93230	00112	380DP905	93230	00338
223DP90	93230	00117	390DP125	93230	00326
223DP90	93230	00158	390DP126	93230	00328
223DP91	93230	00114	390DP127	93230	00329
2234	93230	00174	404DC263E	93230	00213
2258	93230	00182	404DP1495	93230	00270
2284	93230	00171	404DP1503	93230	00289
2289	93230	00056	42024B	93230	00004
2289	93230	00138	42064B	93230	00003
2289	93230	00140	436DC130	93230	00130
2289	93230	00181	436DC56	93230	00131
23DC428	93230	00139	436DC57	93230	00024
23F41B	93230	00212	436DZ58	93230	00147
2364E	93230	00367	436DP209	93230	00311
2364B	93230	00222	436DP210	93230	00313
2364B	93230	00228	439DP51	93230	00319
2370E	93230	00037	439DP51	93230	00343
2370E	93230	00040	439DP52	93230	00048
2370E	93230	00041	439DP52	93230	00320
2370E	93230	00365	439DP52	93230	00334

**SECTION V. INDEX-FEDERAL STOCK NUMBER AND REFERENCE NUMBER
CROSS-REFERENCE TO INDEX NUMBER (Continued)**

<u>REFERENCE NO.</u>	<u>MFG CODE</u>	<u>INDEX NO.</u>	<u>REFERENCE NO.</u>	<u>MFG CODE</u>	<u>INDEX NO.</u>
439DF53	93230	00277	50	36593	00111
439DP53	93230	00317	50	36593	00113
439DP53	93230	00324	50	36593	00118
439DP55	93230	00274	500PB4	93230	00049
439DP55	93230	00276	5344E	93230	00252
439DP55	93230	00279	5345E	93230	00236
439DP55	93230	00359	550DP151	93230	00250
439DP56	93230	00275	550DP152	93230	00235
439DP56	93230	00278	563DP524	93230	00268
4390P54	93230	00214	563DP525	93230	00287
45AL104E	93230	00175	59AC1	93230	00219
450DE70	93230	00152	59AG1	93230	00225
450DE70	93230	00187	6001	93230	00218
4502E	93230	00203	6001	93230	00224
4502E	93230	00370	60072	54123	00029
4545E	93230	00332	610DP145	93230	00273
4585E	93230	00057	618E	93230	00091
4593B	93230	00058	618E	93230	00092
4604E	93230	00059	618E	93230	00358
46140E	93230	00248	628E	93230	00095
46140E	93230	00264	628E	93230	00156
46140E	93230	00371	63DP524	93230	00269
46153E	93230	00201	63DP525	93230	00288
4637E	93230	00315	633VKB41F	89025	00073
47DC59	93230	00242	633VKB41F	89025	00074
47DC59	93230	00258	633VKB41F	89025	00368
470DP65	93230	00195	640E	93230	00098
47104-0	61349	00157	640E	93230	00155
47104-0	61349	00190	642E	93230	00154
480DP36	93230	00197	642E	93230	00189
48912	93230	00082	646E	93230	00097
48943	93230	00081	647E	93230	00096
48955	93230	00084	658E	93230	00127
492DP100	93230	00085	658E	93230	00162
492DP101	93230	00014	6712X41	54123	00019
492DP81	93230	00066	681DP530	93230	00005
492DP82	93230	00077	691E	93230	00125
492DP84	93230	00061	693E	93230	00126
492DP88	93230	00078	693E	93230	00160
493AL172	93230	00076	701DP141	93230	00286
493AL172	93230	00076	701DP188	93230	00284
493AL175	93230	00062	708E	93230	00134
493DP53	93230	00047	710DP235	93230	00199
493DP57	93230	00050	710DP241	93230	00179
495DE11	93230	00178	711D01 22E	93230	00249
49804	93230	00083	714E	93230	00161
49873	93230	00016	714E	93230	00191
499DH619	93230	00209	719E	93230	00121
499DP810	93230	00271	719E	93230	00122
499DP813	93230	00010	719E	93230	00123
499DP827	93230	00322	719E	93230	00124
499DP836	93230	00018	719E	93230	00159
499DP839	93230	00293	719E	93230	00360
499DP840	93230	00294	72hH122	93230	00237
499DP846	93230	00025	72AHi22	93230	00253
499DP852	93230	00023	720DE97E	93230	00215
499DP921	93230	00063	720DE98E	93230	00216
50	36593	00101	720DP106	93230	00223
50	36593	00105	720DP107	93230	00217
50	36593	00107	723DP90	93230	00150
50	36593	00109	730E	93230	00148

**SECTION V. INDEX-FEDERAL STOCK NUMBER AND REFERENCE NUMBER
CROSS-REFERENCE TO INDEX NUMBER (Continued)**

<u>REFERENCE NO.</u>	<u>MFG CODE</u>	<u>INDEX NO.</u>	<u>REFERENCE NO.</u>	<u>MFG CODE</u>	<u>INDEX NO.</u>
732E	93230	00128	876DP65	93230	00340
732E	93230	00129	876DP66	93230	00337
732E	93230	00361	876DP86	93230	00325
76DC17	93230	00205	876DP87	93230	00327
76DH99	93230	00046	880DP967	93230	00323
76DP106	93230	00045	890DP134	93230	00330
760DP92	93230	00229	90DC337E	93230	00208
770DC317E	93230	00232	90DC891E	93230	00090
771DC121E	93230	00251	90DP1274	93230	00266
79DP30	93230	00013	928E	93230	00099
798E	93230	00153	936DC58E	93230	00143
798E	93230	00188	950AL73E	93230	00165
80AL235E	93230	00151	961DP51	93230	00316
80C65E	93230	00089	970DP65	93230	00194
80D74E	93230	00144	992DP85	93230	00075
843DP265	93230	00051	999DP810	93230	00267
866E	93230	00169	999DP839	93230	00292
875DP15	93230	00339	999DP911	93230	00206
875DP16	93230	00336	999DP914	93230	00207

By Order of the Secretary of the Army:

Official:

KENNETH G. WICKHAM,
*Major General, United States Army,
The Adjutant General.*

W. C. WESTMORELAND,
*General, United States Army,
Chief of Staff.*

Distribution:

To be distributed in accordance with DA Form 12-25, Section I, (qty rqr block No.162) organizational maintenance requirements for Equipment: Printing and Reproduction.

☆ U.S. GOVERNMENT PRINTING OFFICE: 1970-397094/418

RECOMMENDED CHANGES TO EQUIPMENT TECHNICAL PUBLICATIONS



*THEN...JOT DOWN THE
DOPE ABOUT IT ON THIS FORM.
CAREFULLY TEAR IT OUT, FOLD IT
AND DROP IT IN THE MAIL.*

SOMETHING WRONG WITH PUBLICATION

FROM: (PRINT YOUR UNIT'S COMPLETE ADDRESS)

DATE SENT

PUBLICATION NUMBER

PUBLICATION DATE

PUBLICATION TITLE

BE EXACT PIN-POINT WHERE IT IS

PAGE NO.	PARA-GRAPH	FIGURE NO.	TABLE NO.

IN THIS SPACE, TELL WHAT IS WRONG AND WHAT SHOULD BE DONE ABOUT IT.

PRINTED NAME, GRADE OR TITLE AND TELEPHONE NUMBER

SIGN HERE

The Metric System and Equivalents

Linear Measure

1 centimeter = 10 millimeters = .39 inch
 1 decimeter = 10 centimeters = 3.94 inches
 1 meter = 10 decimeters = 39.37 inches
 1 dekameter = 10 meters = 32.8 feet
 1 hectometer = 10 dekameters = 328.08 feet
 1 kilometer = 10 hectometers = 3,280.8 feet

Weights

1 centigram = 10 milligrams = .15 grain
 1 decigram = 10 centigrams = 1.54 grains
 1 gram = 10 decigrams = .035 ounce
 1 decagram = 10 grams = .35 ounce
 1 hectogram = 10 decagrams = 3.52 ounces
 1 kilogram = 10 hectograms = 2.2 pounds
 1 quintal = 100 kilograms = 220.46 pounds
 1 metric ton = 10 quintals = 1.1 short tons

Liquid Measure

1 centiliter = 10 milliliters = .34 fl. ounce
 1 deciliter = 10 centiliters = 3.38 fl. ounces
 1 liter = 10 deciliters = 33.81 fl. ounces
 1 dekaliter = 10 liters = 2.64 gallons
 1 hectoliter = 10 dekaliters = 26.42 gallons
 1 kiloliter = 10 hectoliters = 264.18 gallons

Square Measure

1 sq. centimeter = 100 sq. millimeters = .155 sq. inch
 1 sq. decimeter = 100 sq. centimeters = 15.5 sq. inches
 1 sq. meter (centare) = 100 sq. decimeters = 10.76 sq. feet
 1 sq. dekameter (are) = 100 sq. meters = 1,076.4 sq. feet
 1 sq. hectometer (hectare) = 100 sq. dekameters = 2.47 acres
 1 sq. kilometer = 100 sq. hectometers = .386 sq. mile

Cubic Measure

1 cu. centimeter = 1000 cu. millimeters = .06 cu. inch
 1 cu. decimeter = 1000 cu. centimeters = 61.02 cu. inches
 1 cu. meter = 1000 cu. decimeters = 35.31 cu. feet

Approximate Conversion Factors

<i>To change</i>	<i>To</i>	<i>Multiply by</i>	<i>To change</i>	<i>To</i>	<i>Multiply by</i>
inches	centimeters	2.540	ounce-inches	Newton-meters	.007062
feet	meters	.305	centimeters	inches	.394
yards	meters	.914	meters	feet	3.280
miles	kilometers	1.609	meters	yards	1.094
square inches	square centimeters	6.451	kilometers	miles	.621
square feet	square meters	.093	square centimeters	square inches	.155
square yards	square meters	.836	square meters	square feet	10.764
square miles	square kilometers	2.590	square meters	square yards	1.196
acres	square hectometers	.405	square kilometers	square miles	.386
cubic feet	cubic meters	.028	square hectometers	acres	2.471
cubic yards	cubic meters	.765	cubic meters	cubic feet	35.315
fluid ounces	milliliters	29.573	cubic meters	cubic yards	1.308
pints	liters	.473	milliliters	fluid ounces	.034
quarts	liters	.946	liters	pints	2.113
gallons	liters	3.785	liters	quarts	1.057
ounces	grams	28.349	liters	gallons	.264
pounds	kilograms	.454	grams	ounces	.035
short tons	metric tons	.907	kilograms	pounds	2.205
pound-feet	Newton-meters	1.356	metric tons	short tons	1.102
pound-inches	Newton-meters	.11296			

Temperature (Exact)

°F	Fahrenheit temperature	5/9 (after subtracting 32)	Celsius temperature	°C
----	---------------------------	-------------------------------	------------------------	----

